



Powerful Synergies



# COPMA

208

**HIGH POWER  
MODEL**

# COPMA 208

Performance & Power

**208 HAS THE HIGHEST LIFTING RANGE AND TOP POWER-WEIGHT RATIO COMBINING ADVANCED TECHNOLOGY FEATURES FOR MORE PERFORMANCE.**

- **HIGH POWER model, load category - 20 Ton/Mt**
- **Designed for every kind of job**
- **Strong linkage system on each arm to get maximum performance**
- **Precise and fast work execution**
- **High safety standards**





**THE MOST  
POWERFUL  
CRANE FOR  
THE TOUGHEST  
MARKETS**



# COPMA 208

More Safety & Security

**DESIGNED WITH THE HIGHEST  
HYDRAULIC SYSTEMS AND THE  
TOUGHEST STRUCTURAL STEEL  
TO PERFORM THE MAXIMUM  
LIFTING CAPACITY.**

- **Performing and reliable electronic devices**
- **Column with high mechanical characteristics**
- **High Degree of User Friendliness**
- **Ready to work in a few movements**
- **Excellent weight/performance ratio**





**DESIGNED  
FOR FLEXIBLE  
SERVICES**



# COPMA 208

## Technical Features

**CUTTING EDGE FEATURES  
FOR MAXIMUM LIFTING  
POWER, STABILITY AND  
OPERATIONAL SAFETY IN EVERY  
WORKING CONDITION.**

### Standard features

▪ easy use



▪ control



▪ structure



### optional features

▪ easy use



▪ control



\*E.C. market specific equipment





### High Speed Extension

Hydraulic system for reducing load losses and bottlenecks for the correct output sequence of the extensions by increasing the speed of 30%-60% thanks to the regenerative valve. Greater continuous performance thanks to lower fluid temperature.



### Crane Monitoring System 2.0

Crane stability control system TES2-TES3 with safety and overload controls and HPVE lifting speed management. Active control on 4-8 working areas according to the model and vehicle stability requirements.



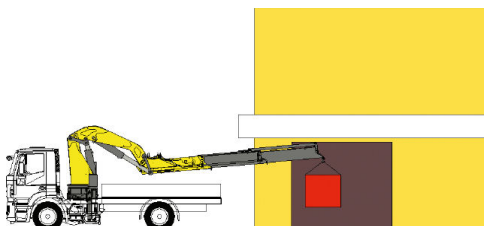
### Negative Control System

Slope sensors mounted on the articulated booms of the crane, combined with the electronic control, control the maximum vertical angle of the arms and the JIB preventing incorrect or dangerous movements by the operator.



### Negative Boom System

The linkage on the articulation of the secondary boom permits the introduction of loads within restricted spaces. It enables the recovery of the deflection of the extension boom group due to the weight and the load raised on the extensions.



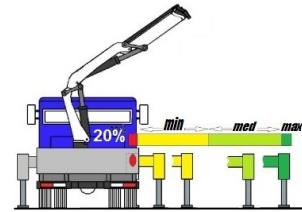
### Transport Alert Device

Sensors on the basement follow the correct closing of the beams and a column switch sensor indicates if the crane is in a folded position, no more than 4 mt in height. The operator is warned with light and sound signals in the truck cabin.



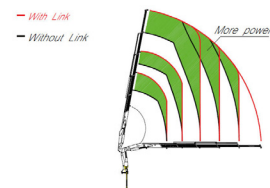
### Truck Electronic Stability 3.0

Active stability control for performance optimization according to the type of stabilization (3) to guarantee maximum safety in all working conditions. Mandatory in the CE market, it helps a better vehicle-crane configuration.



### Constant Control Link

The cranes equipped with connecting rods on the articulations, with a constant lifting moment over the entire working arc, allow to 100% optimize the crane's capacity in positions close to the maximum vertical.



### Rotation Rack Pinion

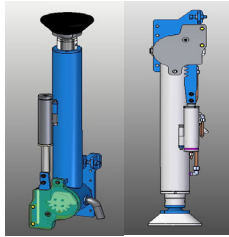
The rotation system with rack and pinion is the best optimal solution for the most performative lifting capacity, it reduce the weights and crane dimension for the most compact configuration.





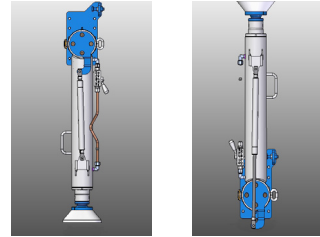
### Hydraulic Lifting Stabilizers 2.0

The cylinder of the stabilizer is lifted with an auxiliary jack, allowing the vertical movement within the bushes or rotating around a pin. It saves operative time in increasing the security of the setup.



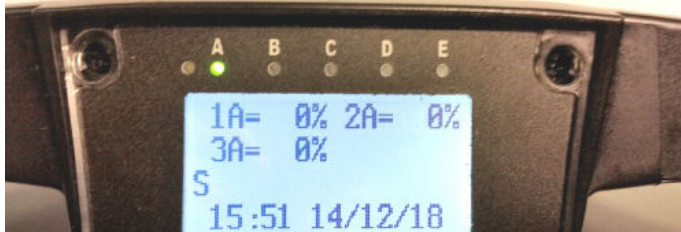
### Manual Lifting Stabilizers 2.0

Manual raising of the stabilizers facilitated by a compressed gas cylinder which assists the operator during the rotation of the jack. This system assists the operator with less effort in adjusting the legs.



### Electronic Radio Display

A display on the remote control allows the operator to maintain the total control of all the crane functions in real time by managing the work mode, the stability control, and oversee any maintenance and diagnostic messages.



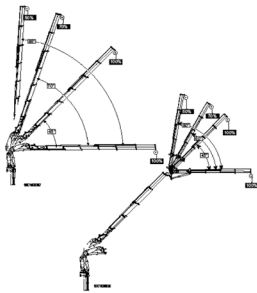
### Radio Remote Control 3.0

Radio control with directly flanged actuation electronics with proportional distribution. The remote control allows operating the crane while constantly monitoring the areas of operation.



### Winch Linear Control

The winch linear electronic control allows pulling the rope according to the working angle of the crane and the JIB. It optimizes the load control and makes every movement easier and safer.

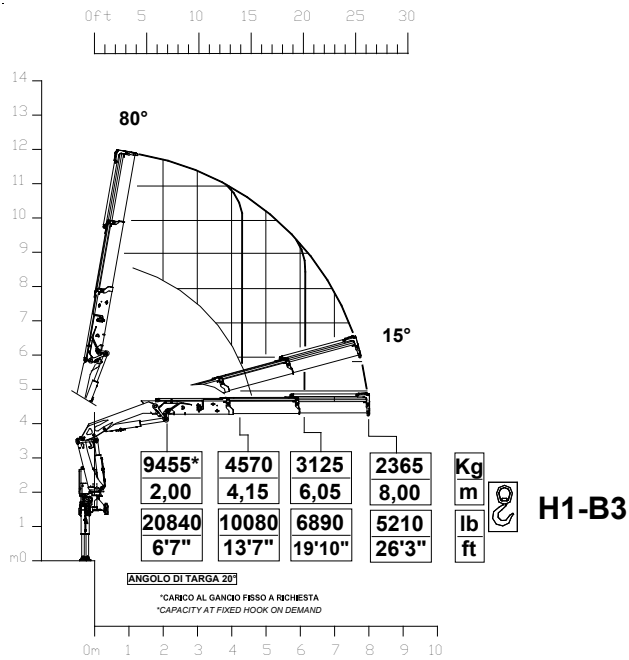




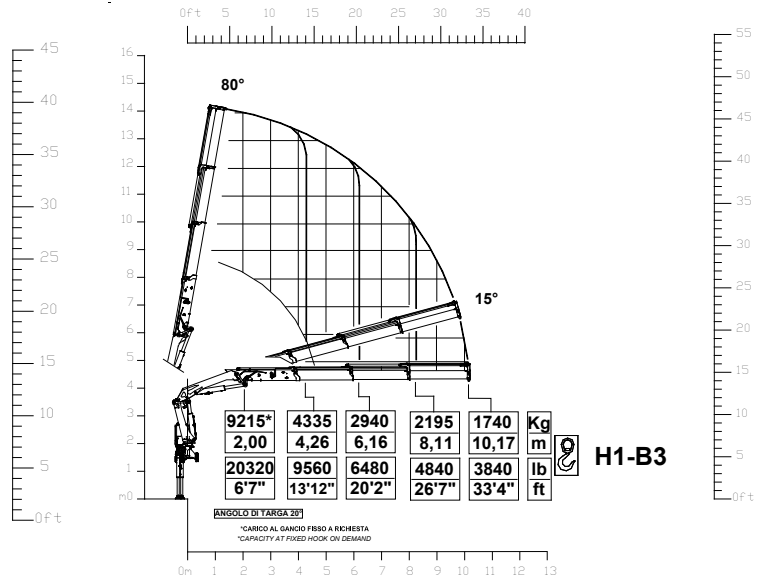
# 208 HIGH POWER

## Load Charts

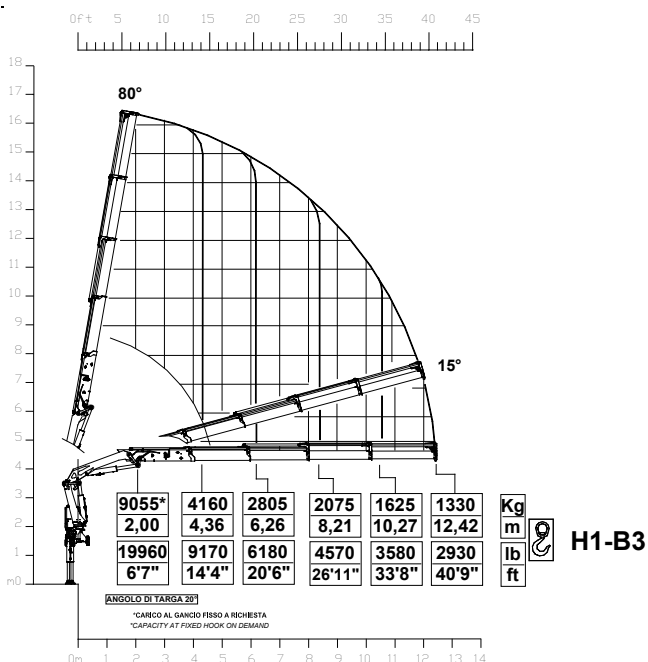
### 2 extensions



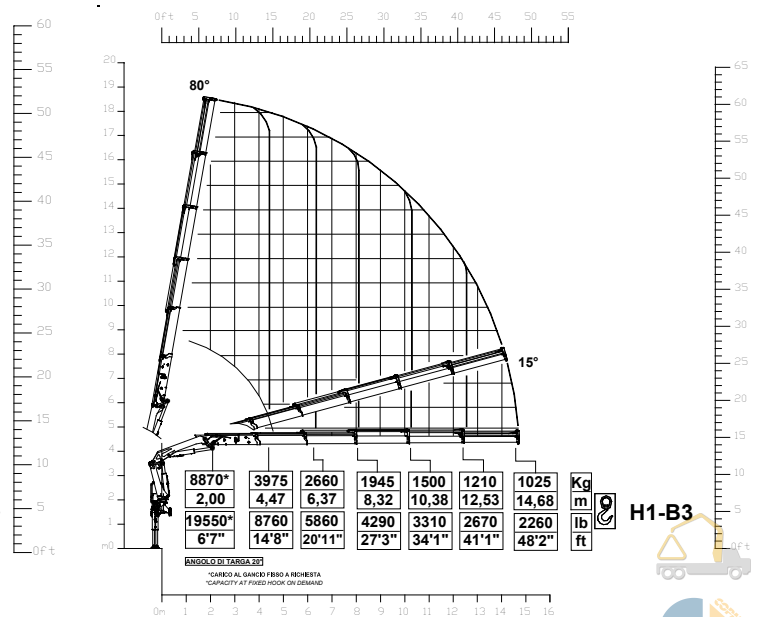
### 3 extensions



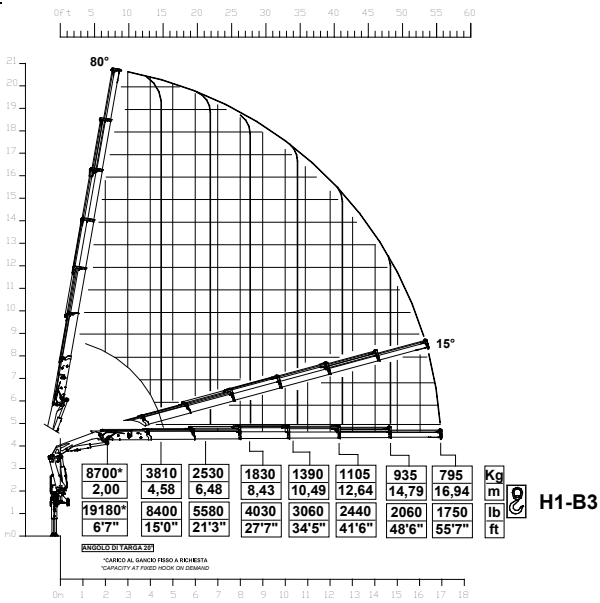
### 4 extensions



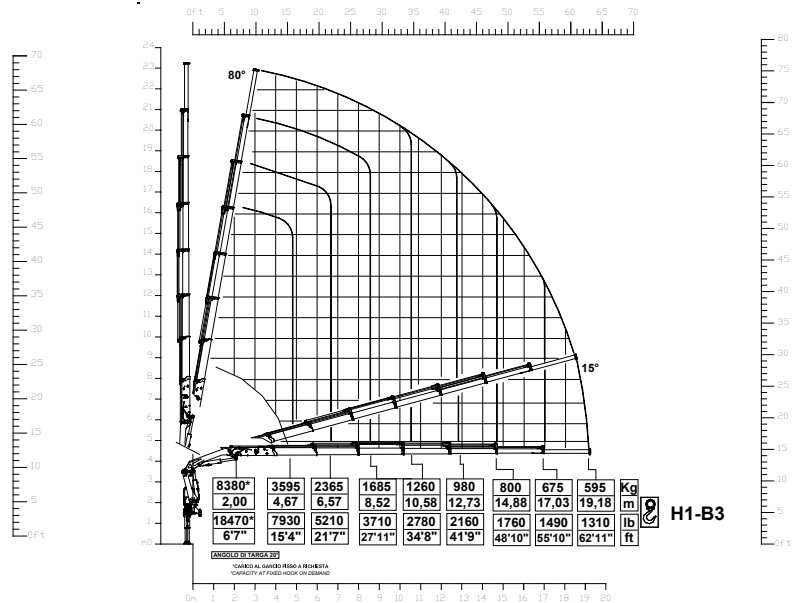
### 5 extensions



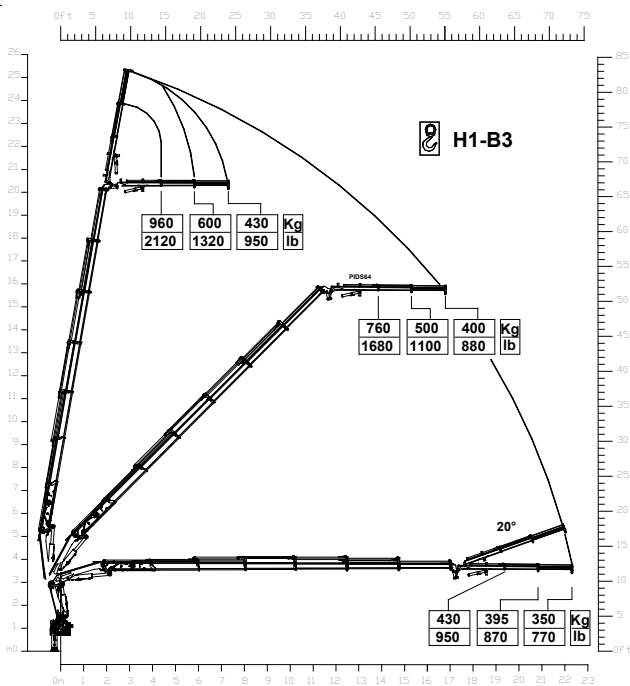
## 6 extensions



## 7 extensions



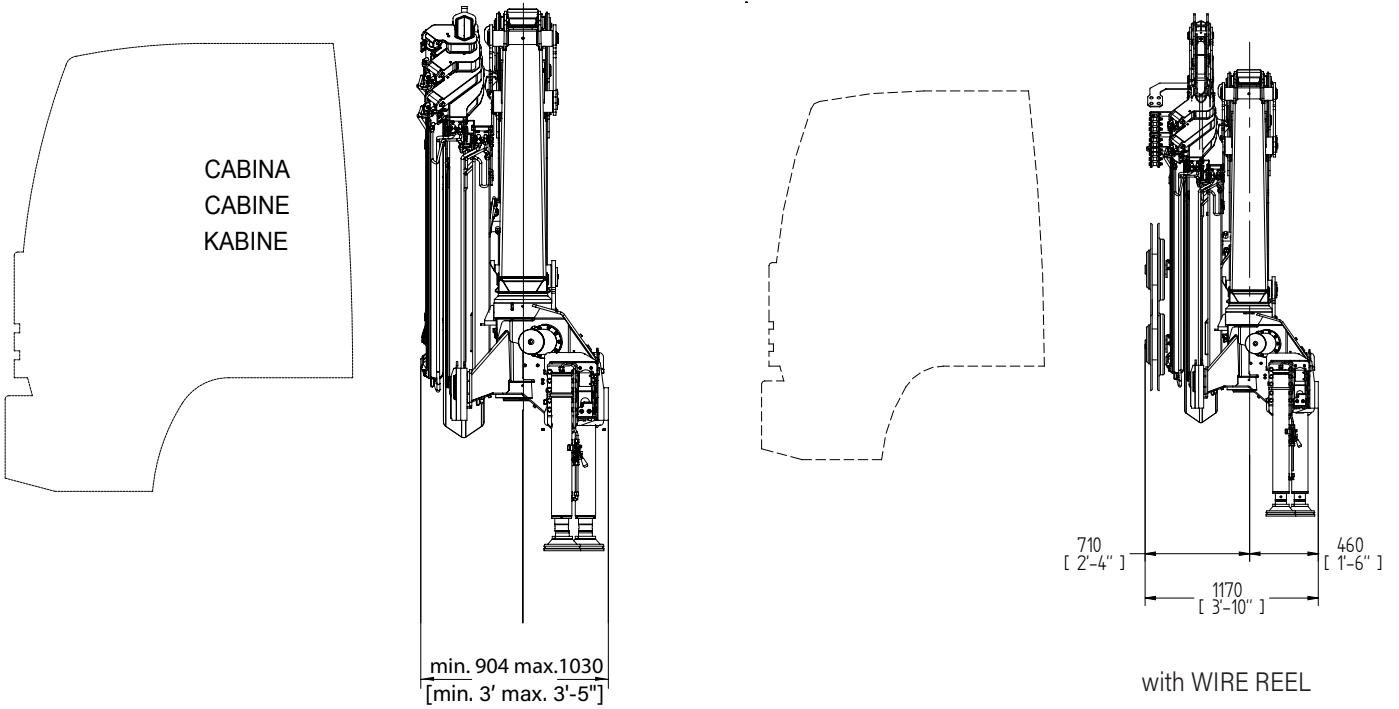
## 208.6 + J2



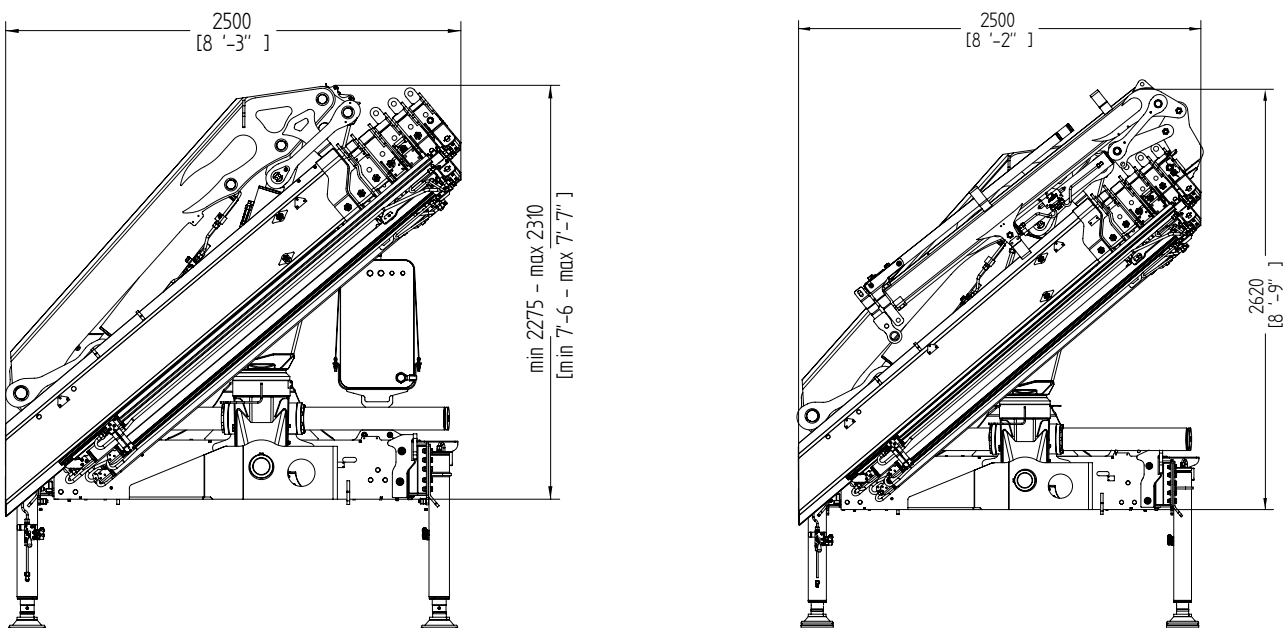
# 208 HIGH POWER

## Crane Dimensions

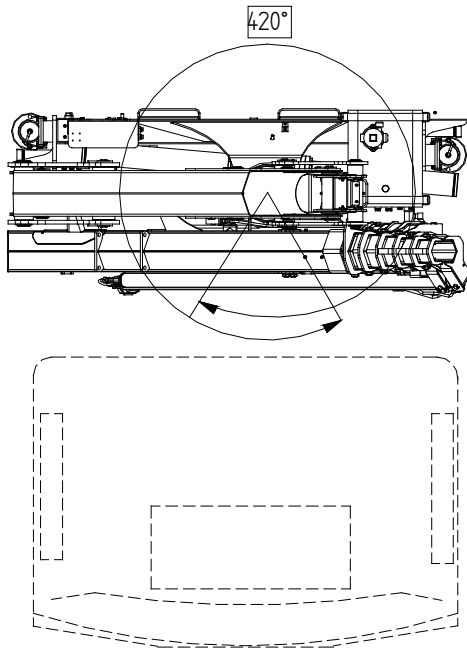
### back cabin left



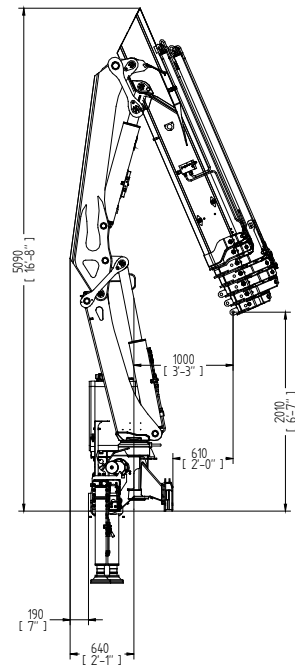
### rear truck



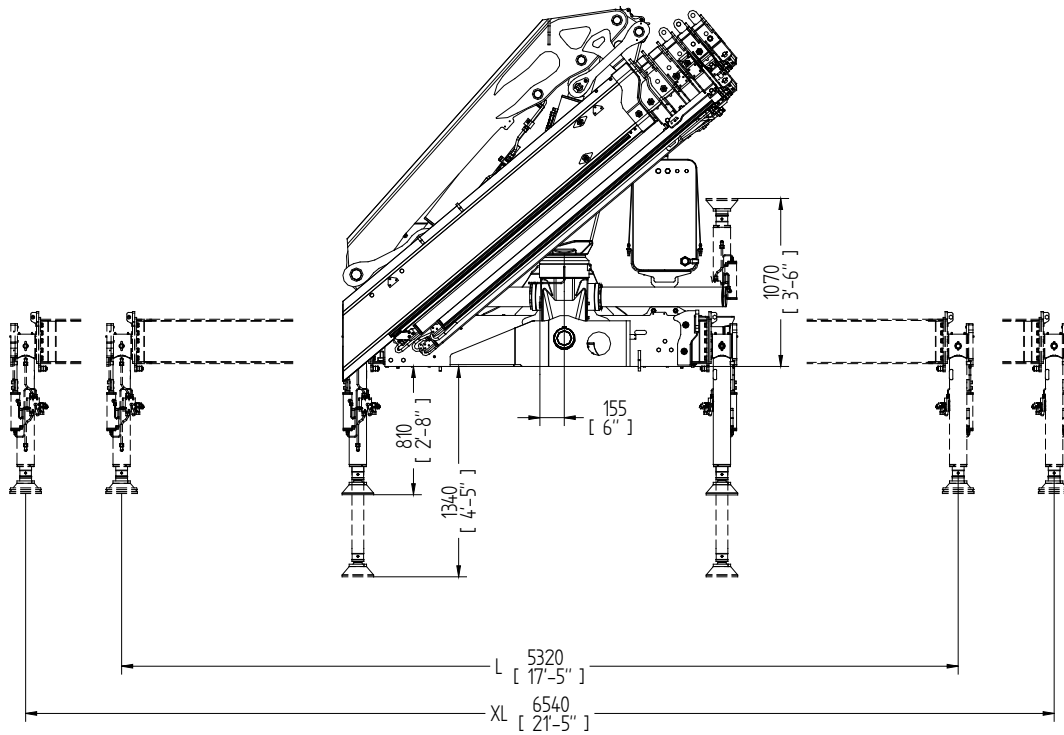
top cabin



operational



extended outriggers












\* Note:  
Technical features are not binding.  
The company reserves itself the right to any modification without notice












# 208 HIGH POWER

## Technical Data

### summarized data

	 kN.m	 bar	 l/min	 kg	 °	 mm	 mm	 mm	 mm
208.2	185,5	325	50	2220	420	2500	904	2275	5270/6500
208.3	180,8	325	50	2360	420	2500	904	2275	5270/6500
208.4	177,7	325	50	2490	420	2500	935	2275	5270/6500
208.4J2	177,7	325	50	2850	420	2500	1084	2640	5270/6500
208.4J3	177,7	325	50	2910	420	2500	1084	2640	5270/6500
208.4J4	177,7	325	50	2955	420	2500	1084	2640	5270/6500
208.5	174	325	50	2610	420	2500	1000	2275	5270/6500
208.5J2	174	325	50	2980	420	2500	1084	2640	5270/6500
208.5J3	174	325	50	3040	420	2500	1084	2640	5270/6500
208.5J4	174	325	50	3085	420	2500	1084	2640	5270/6500
208.6	170,9	325	50	2710	420	2500	1030	2275	5270/6500
208.6J2	170,9	325	50	3015	420	2500	1170	2620	5270/6500
208.7	164,4	325	50	2810	420	2500	1030	2310	5270/6500

	 lbs.ft	 psi	 gal/min	 lbs	 °	 ft/inc	 ft/inc	 ft/inc	 ft/inc
208.2	136818	4713	13,21	4890	420	8'2"	3'1"	7'6"	17'3"-21'3"
208.3	133351	4713	13,21	5200	420	8'2"	3'1"	7'6"	17'3"-21'3"
208.4	131065	4713	13,21	5490	420	8'2"	3'1"	7'6"	17'3"-21'3"
208.4J2	131065	4713	13,21	6280	420	8'2"	3'7"	8'8"	17'3"-21'3"
208.4J3	131065	4713	13,21	6420	420	8'2"	3'7"	8'8"	17'3"-21'3"
208.4J4	131065	4713	13,21	6510	420	8'2"	3'7"	8'8"	17'3"-21'3"
208.5	128336	4713	13,21	5750	420	8'2"	3'3"	7'6"	17'3"-21'3"
208.5J2	128336	4713	13,21	6570	420	8'2"	3'7"	8'8"	17'3"-21'3"
208.5J3	128336	4713	13,21	6700	420	8'2"	3'7"	8'8"	17'3"-21'3"
208.5J4	128336	4713	13,21	6800	420	8'2"	3'7"	8'8"	17'3"-21'3"
208.6	125902	4713	13,21	5970	420	8'2"	3'5"	7'6"	17'3"-21'3"
208.6J2	125902	4713	13,21	6650	420	8'2"	3'10"	8'7"	17'3"-21'3"
208.7	106541	4713	13,21	6190	420	8'2"	3'5"	7'7"	17'3"-21'3"

### technical data

Max. lifting moment	185.5 kNm	136818 ft.lbs
Max. hydraulic outreach	19.32 m	63'39"
Slewing angle	420°	420°
Slewing torque	2840 daNm	20947 ft.lbs
Stabilizer spread	5.27/6.5 mt	17'3" / 21'3"
Fitting space required (min./max)	0.90 m/1.03 m	3' / 3'5"
Width folded	2,50 m	8'2"
Max. operating pressure	325 bar	4641 psi
Recommended pump capacity	50 l/min	13.1 US gal./min
Dead weight (vers .2)	2220 kg	4894 lbs

\* Note: technical features are not binding, the company reserves itself the right to any modification without notice







**GET READY TO A  
BETTER LIFTING  
EXPERIENCE**



# COPMA 208



knuckle  
boom  
cranes



Powerful Synergies



**CPS**



**CPS  
STEEL**

## CPS GROUP S.P.A.

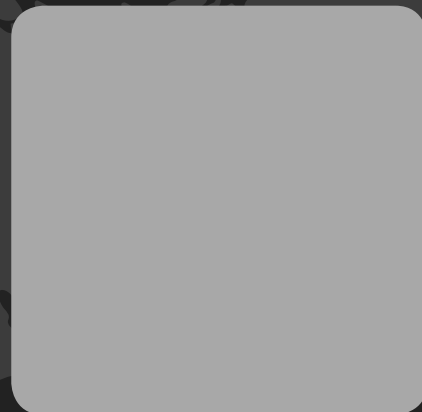
281 Via Emilia , Castel Bolognese (RA) , 48014  
Italy

T +39 0546 653 711

[sales.cpsgroup@cps-group.com](mailto:sales.cpsgroup@cps-group.com)

[service.cpsgroup@cps-group.com](mailto:service.cpsgroup@cps-group.com)

[cps-group.com](http://cps-group.com)



COPMA MODEL 208 HIGH POWER 6-2019 all rights reserved CPS GROUP

