



Powerful Synergies



®



COPMA[®]

280B

TOP RANGE
MODEL

COPMA 280B

Performance & Power

280B HAS COMPACT DIMENSIONS AND OPTIMIZED WEIGHTS WITH A CUSTOMIZED DESIGN FOR MORE POWER AND RELIABILITY AT EVERY OPERATOR NEED.

- **TOP RANGE - HEAVY RANGE model, load category - 28 Ton/Mt**
- **High tensile strength steel**
- **Efficient safety system**
- **Reliability, speed and precision**
- **Extra long working life cycle**
- **Easier maintenance operations**





THE MOST POWERFUL CRANE FOR THE TOUGHEST MARKETS

COPMA 280B

More Safety & Security

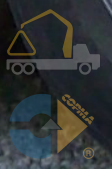
**DESIGNED WITH THE HIGHEST
HYDRAULIC SYSTEMS AND THE
TOUGHEST STRUCTURAL STEEL
TO PERFORM THE MAXIMUM
LIFTING CAPACITY.**

- **Superior Hydraulic Technology**
- **Dynamic Electronic Controls**
- **High Degree of User Friendliness**
- **Efficiency and Reliability thanks to superior structural features**
- **More Efficiency with advanced electronic controls**





**DESIGNED
FOR FLEXIBLE
SERVICES**



COPMA 280B

Technical Features

**CUTTING EDGE FEATURES FOR
MAXIMUM LIFTING POWER,
STABILITY AND OPERATIONAL
SAFETY IN EVERY WORKING
CONDITION.**

Standard features

- easy use



- control



- structure



optional features

- easy use



- control



*E.C. market specific equipment





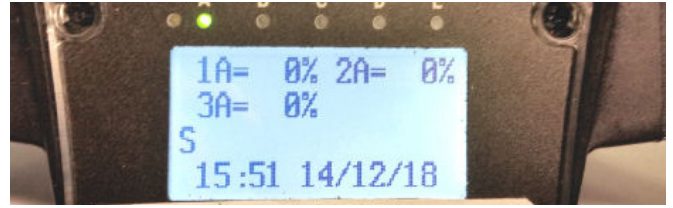
High Speed Extension

Hydraulic system for reducing load losses and bottlenecks for the correct output sequence of the extensions by increasing the speed of 30%-60% thanks to the regenerative valve. Greater continuous performance thanks to lower fluid temperature.



Electronic Radio Display

A display on the remote control allows the operator to maintain the total control of all the crane functions in real time by managing the work mode, the stability control, and oversee any maintenance and diagnostic messages.



Transport Alert Device

Sensors on the basement guarantee the correct closing of the beams and a column switch sensor indicates if the crane is in a folded position, no more than 4 Mt in height. The operator is warned with light and sound signals in the truck cabin.



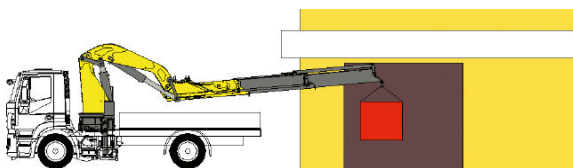
Hydraulic Lifting Stabilizers 2.0

The stabilizer cylinder is lifted thanks to an auxiliary jack, allowing the vertical movement inside a bush or a rotation around a pin. This easy use system saves time and allows an efficient stabilizer set up.



Negative Boom System

The linkage on the articulation of the secondary boom permits the introduction of loads within restricted spaces. It enables the recovery of the deflection of the extension boom group due to the weight and the load raised on the extensions.



Radio Remote Control 3.0

Radio control with directly flanged actuation electronics with proportional distribution. The remote control allows operating the crane while constantly monitoring the areas of operation.



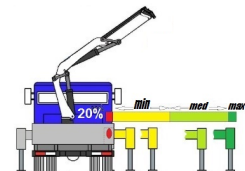
Crane Monitoring System 2.0

Crane stability control system TES2-TES3 with safety and overload controls and HPVE lifting speed management. Active control on 4-8 working areas according to the model and vehicle stability requirements.



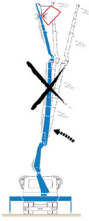
Truck Electronic Stability 3.0

Active stability control for performance optimization according to the type of stabilization to guarantee maximum safety in all working conditions. Mandatory in the CE market, it helps a better vehicle-crane configuration.



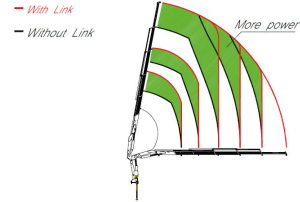
NCS
control
Negative Control System

Slope sensors mounted on the articulated booms of the crane, combined with the electronic control, manage the maximum vertical angle of the arms and the JIB preventing incorrect or dangerous movements by the operator.



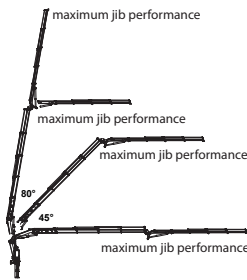
CCLS
structure
Constant Control Link

The cranes equipped with connecting rods on the articulations, with a constant lifting moment over the entire working arc, allow to 100% optimize the crane's capacity in positions close to the maximum vertical.



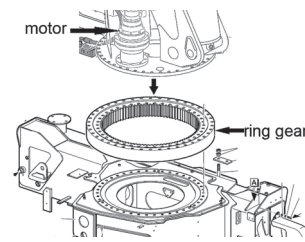
PJM
control
Power Jib Monitoring

The PJM system guarantees to operate with the maximum performance in every working condition thanks to a dynamic variation of the maximum pressure according to the crane arm angles.



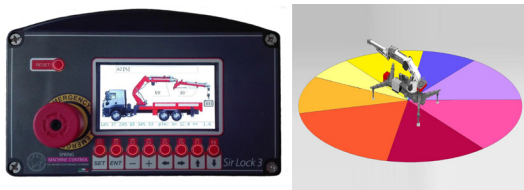
RES 1.0
structure
Rotation Endless System 1.0

A rotating bearing and one gearbox system, the electric wires are linked between base-column with a swivel electrical-hydraulic joint. Allows operator to gain maximum power also at the slowest operational speed and having the highest precision.



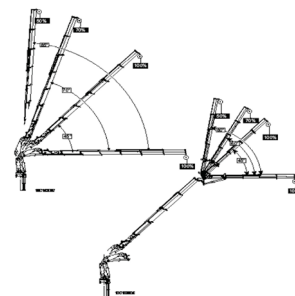
CMS 3.0
control
Crane Monitoring System 3.0

Crane stability control system TES2-TES3, with safety and overload controls medium high-range crane and HPVE lifting speed management. Active control on 4-8 working areas according to the model and vehicle stability requirements.



WLC
control
Winch Linear Control

The winch linear electronic control allows pulling the rope according to the working angle of the crane and the JIB. It optimizes the load control and makes every movement easier and safer.



CRC 4.0
control
COPMA® Remote Connectivity 4.0

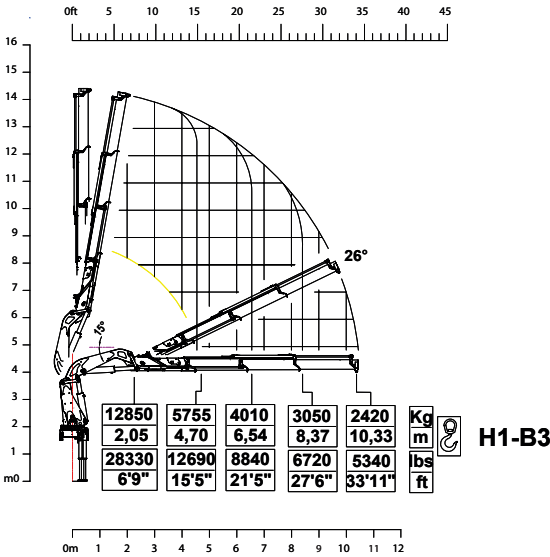
COPMA® Remote Connectivity 4.0 to the crane. Two-way communication by GPRS for real-time diagnosis and remote real-time parameter setting and/or adjustment.



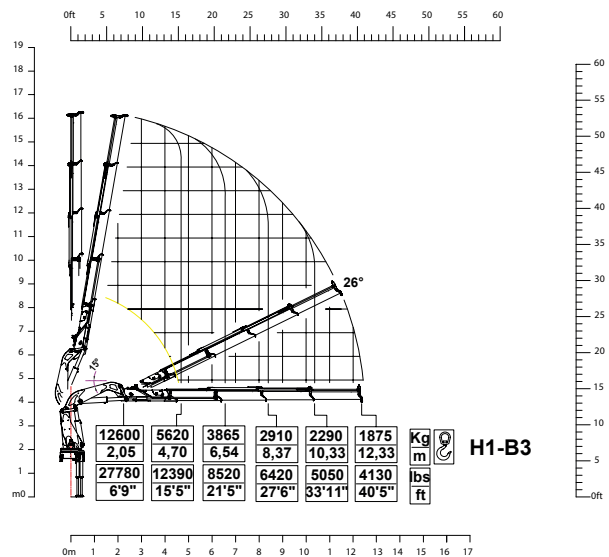
280B TOP RANGE

Load Charts

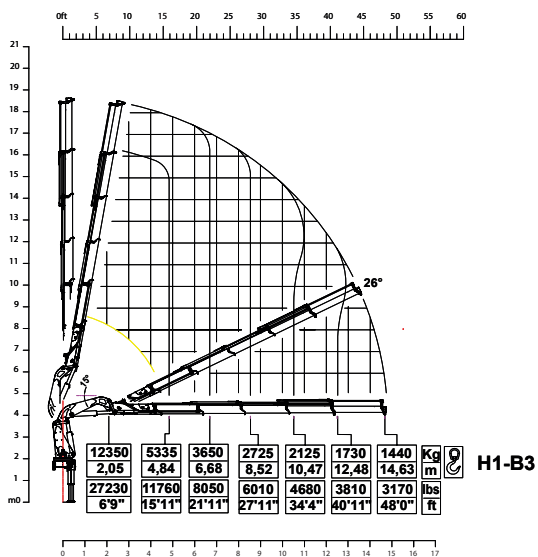
3 extensions



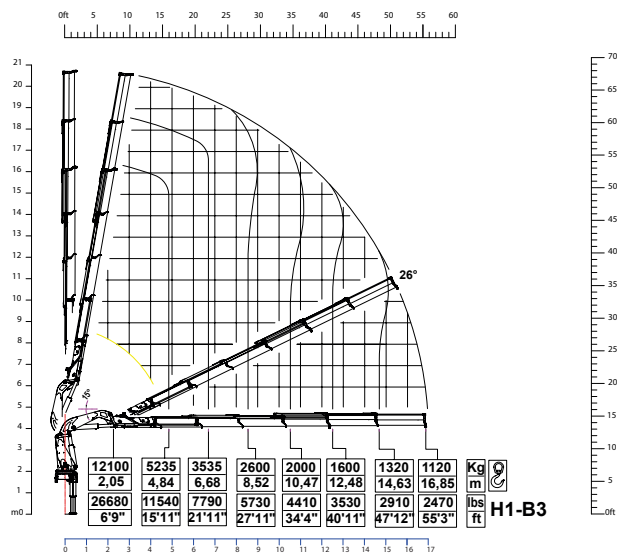
4 extensions



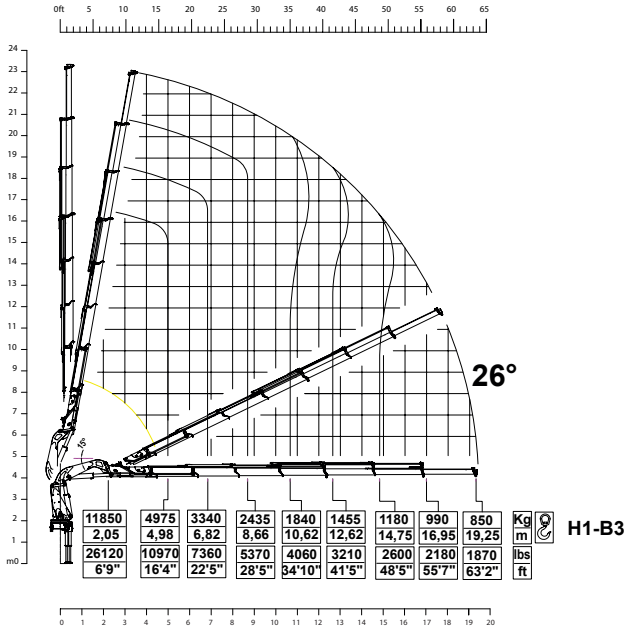
5 extensions



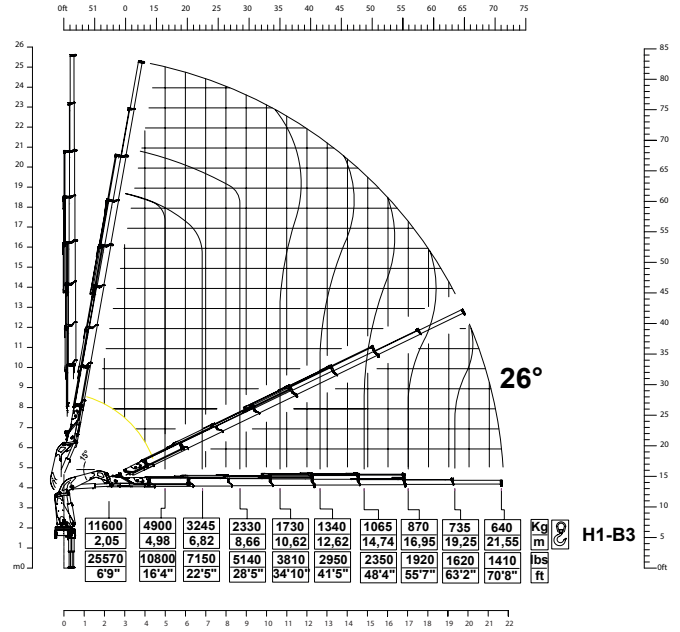
6 extensions



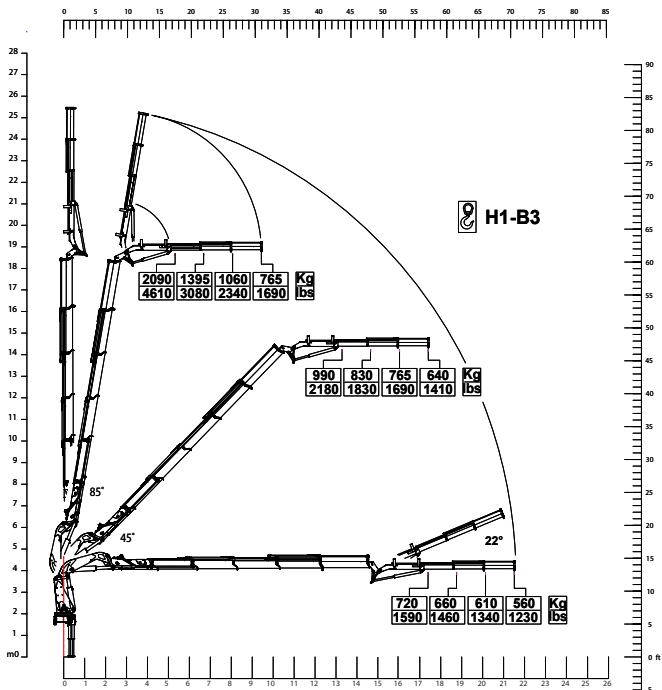
7 extensions



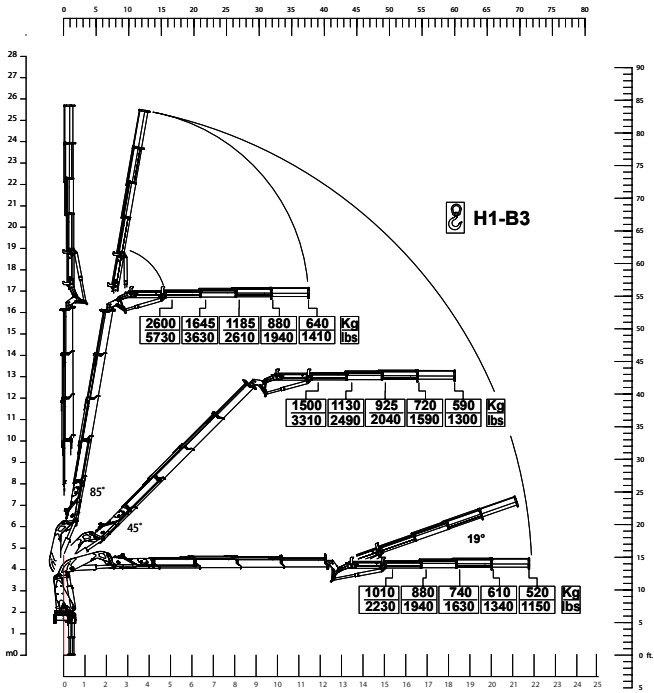
8 extensions



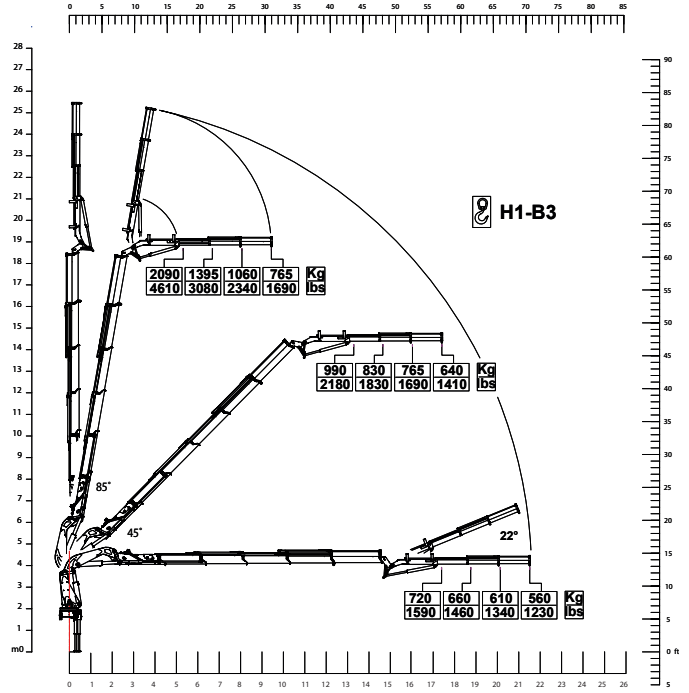
280B.4 + J3



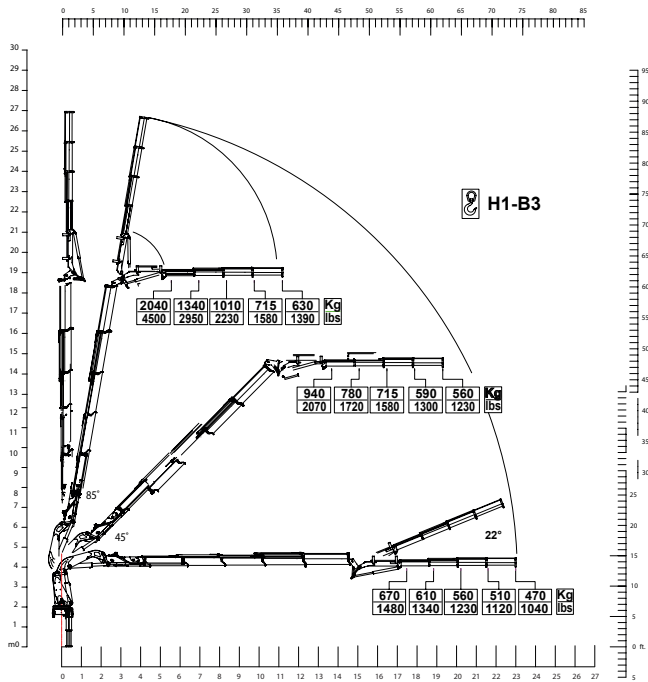
280B.4 + J4



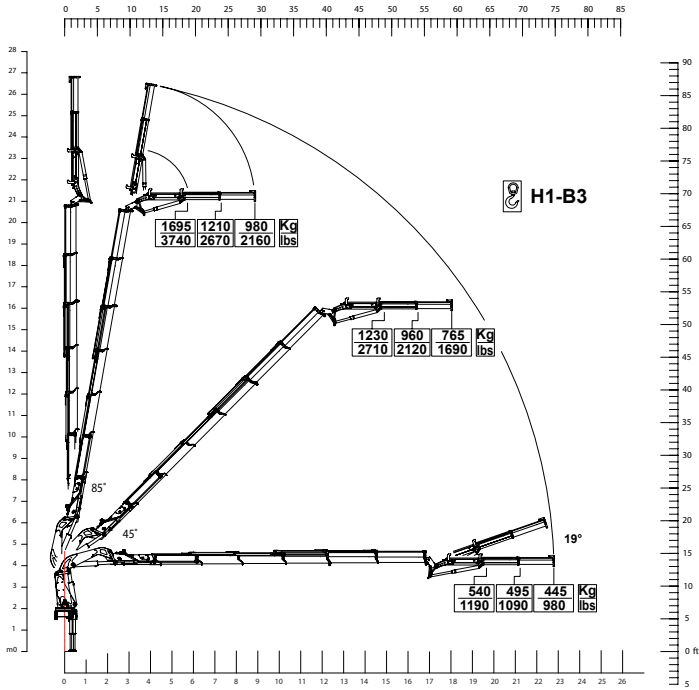
280B.5 + J3



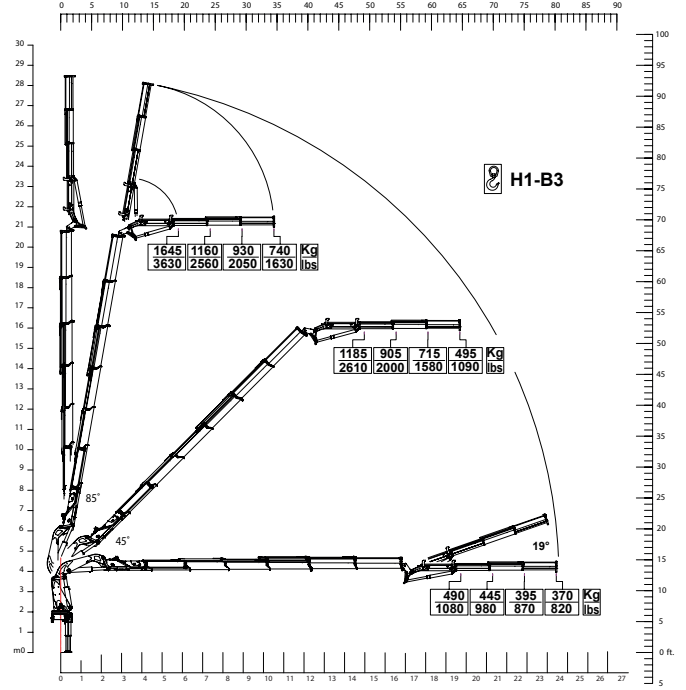
280B.5 + J4



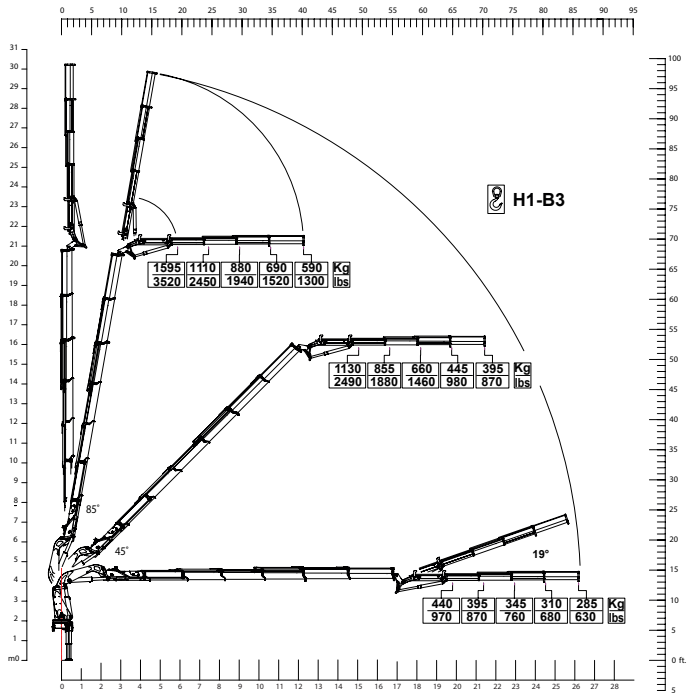
280B.6 + J2



280.B6 + J3



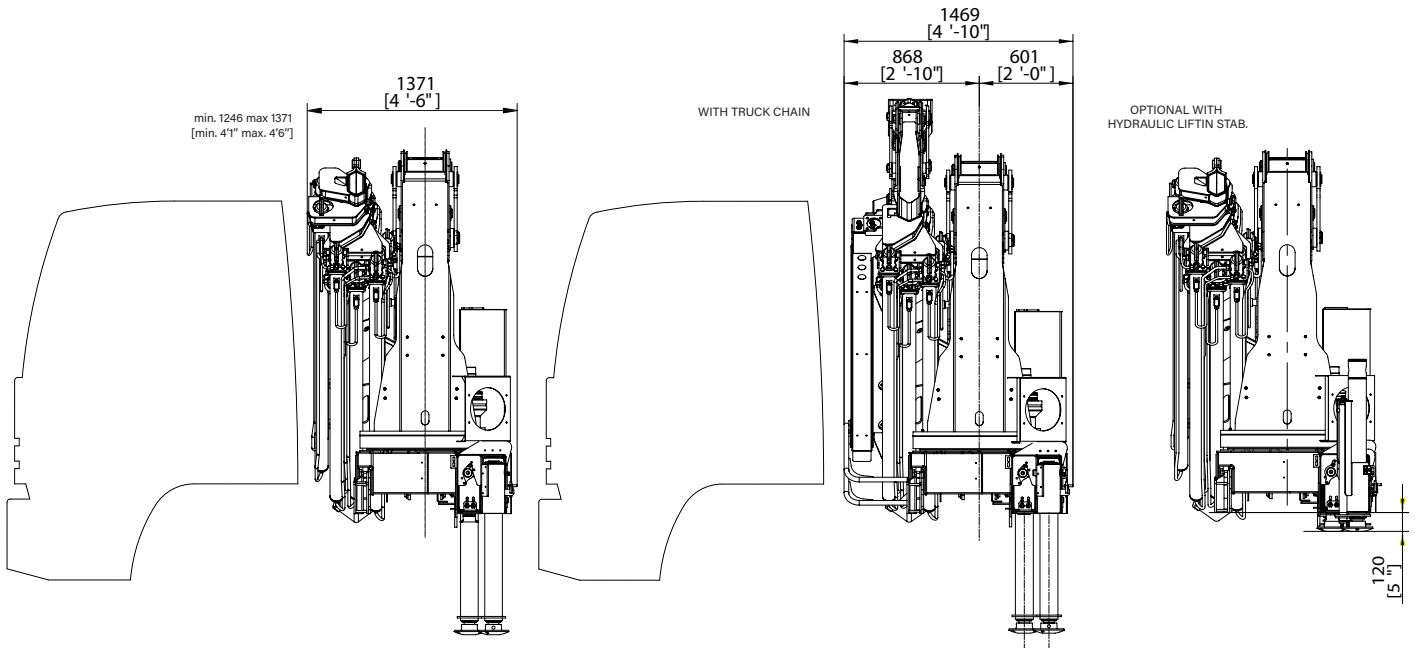
280B.6 + J4



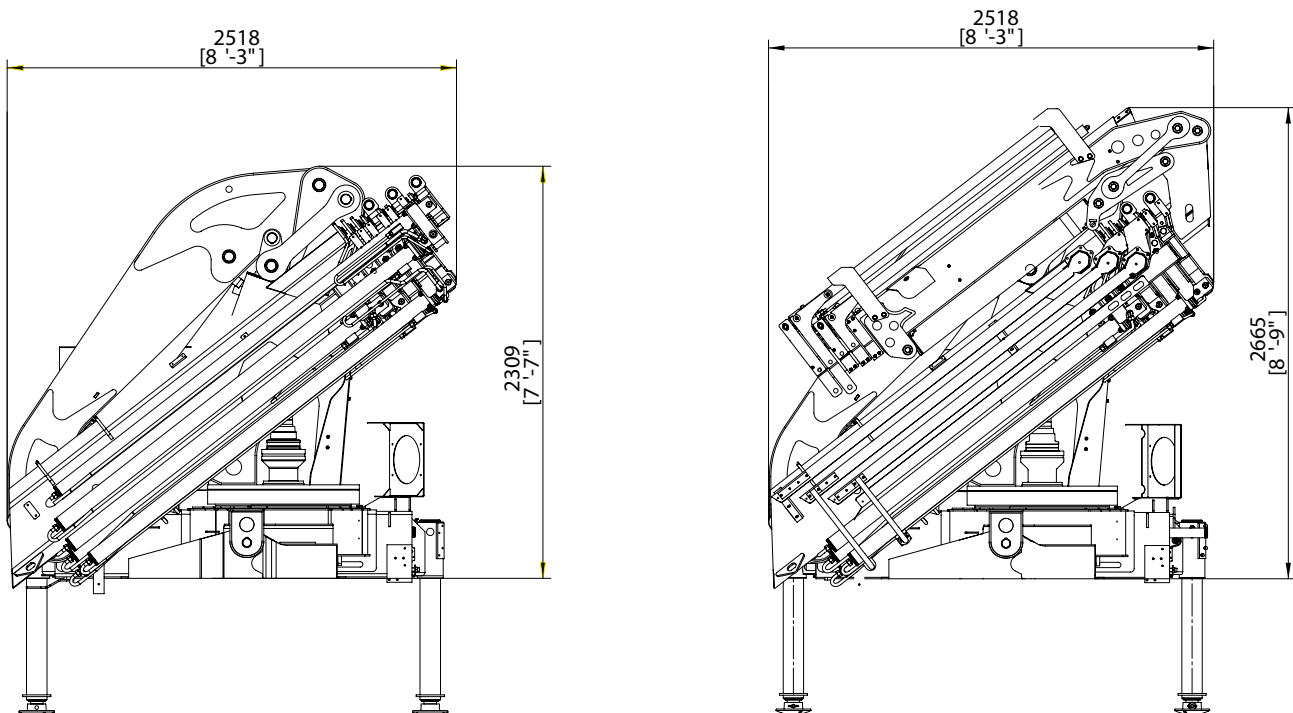
280B TOP RANGE

Crane Dimensions

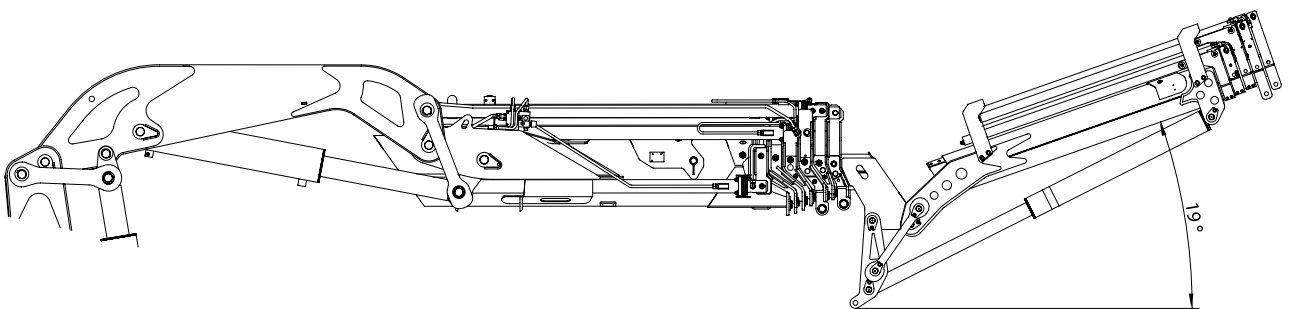
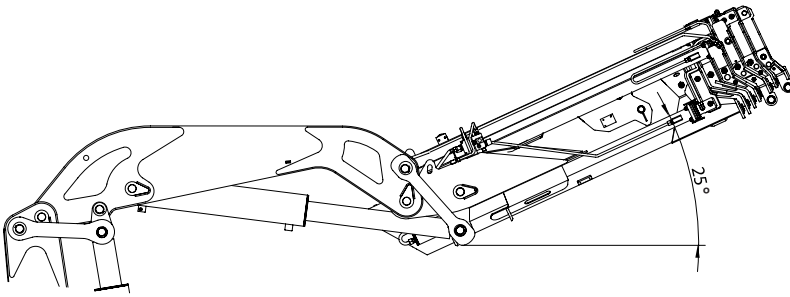
back cabin left



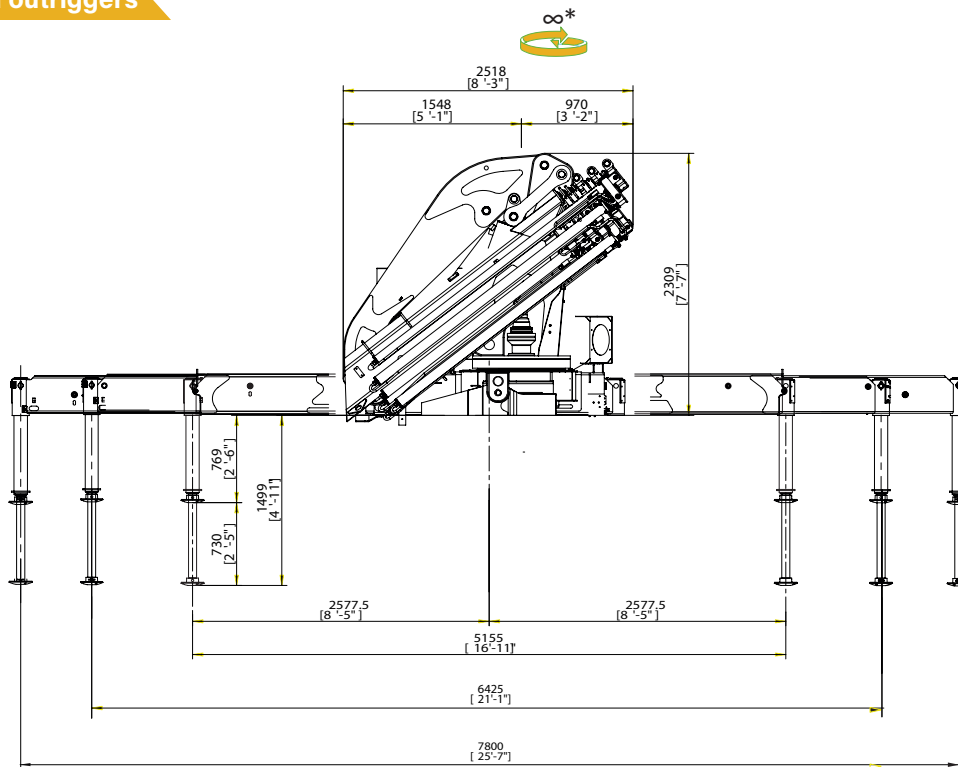
rear truck



operational



extended outriggers



*600° for Extra E.C. market










Note: technical features are not binding, the company reserves itself the right to any modification without notice












280B TOP RANGE

Technical Data

summarized data

									
	kN.m	bar	l/min	kg	°	mm	mm	mm	mm
280B.3	261	310	50	3600	∞*	2448	1246	2309	5200/6400/7800
280B.4	259,1	310	50	3780	∞*	2470	1267	2309	5200/6400/7800
280B.4J3	259,1	310	50	4275	∞*	2470	1469	2595	5200/6400/7800
280B.4J4	259,1	310	50	4325	∞*	2470	1469	2595	5200/6400/7800
280B.5	253	310	50	3930	∞*	2475	1267	2309	5200/6400/7800
280B.5J3	253	310	50	4490	∞*	2475	1447	2665	5200/6400/7800
280B.5J4	253	310	50	4550	∞*	2475	1447	2665	5200/6400/7800
280B.6	253,4	310	50	4080	∞*	2518	1342	2309	5200/6400/7800
280B.6J2	253,4	310	50	4580	∞*	2518	1472	2665	5200/6400/7800
280B.6J3	253,4	310	50	4640	∞*	2518	1472	2665	5200/6400/7800
280B.6J4	253,4	310	50	4700	∞*	2518	1472	2665	5200/6400/7800
280B.7	243	310	50	4205	∞*	2518	1340	2309	5200/6400/7800
280B.8	244	310	50	4330	∞*	2518	1370	2309	5200/6400/7800

									
	lbs.ft	psi	gal/min	lbs	°	ft/inc	ft/inc	ft/inc	ft/inc
280B.3	188590	4495	13,1	7940	∞*	8'0"	4'1"	9'1"	16'11"/21'1"/25'7"
280B.4	187000	4495	13,1	8330	∞*	8'1"	4'2"	9'1"	16'11"/21'1"/25'7"
280B.4J3	187000	4495	13,1	9560	∞*	8'1"	4'10"	8'6"	16'11"/21'1"/25'7"
280B.4J4	187000	4495	13,1	9700	∞*	8'1"	4'10"	8'6"	16'11"/21'1"/25'7"
280B.5	183217	4495	13,1	8660	∞*	8'1"	4'2"	7'7"	16'11"/21'1"/25'7"
280B.5J3	183217	4495	13,1	9890	∞*	8'1"	4'9"	8'9"	16'11"/21'1"/25'7"
280B.5J4	183217	4495	13,1	10030	∞*	8'1"	4'9"	8'9"	16'11"/21'1"/25'7"
280B.6	183000	4495	13,1	8990	∞*	8'3"	4'5"	7'7"	16'11"/21'1"/25'7"
280B.6J2	183000	4495	13,1	10090	∞*	8'3"	4'10"	8'9"	16'11"/21'1"/25'7"
280B.6J3	183000	4495	13,1	10120	∞*	8'3"	4'10"	8'9"	16'11"/21'1"/25'7"
280B.6J4	183000	4495	13,1	10360	∞*	8'3"	4'10"	8'9"	16'11"/21'1"/25'7"
280B.7	175796	4495	13,1	9270	∞*	8'3"	4'5"	7'7"	16'11"/21'1"/25'7"
280B.8	176000	4495	13,1	9550	∞*	8'3"	4'6"	7'7"	16'11"/21'1"/25'7"

*600° for Extra E.C. market

technical data

Max. lifting moment	261 kNm	161956 ft.lbs
Max. hydraulic outreach	21,55 m	61'4"
Slewing angle	∞	∞
Slewing torque	3600 daNm	23652 ft.lbs
Stabilizer spread	5,14/6,4/7,8 mt	16'11"/21'1"/25'7"
Fitting space required (min./max)	1,24 m/1,47 m	4'1"/4'10"
Width folded	2,52 m	8'3"
Max. operating pressure	310 bar	4495 psi
Recommended pump capacity	50 l/min	13,1 US gal./min
Dead weight (vers. 3)	3600 kg	7940 lbs

Note: technical features are not binding, the company reserves itself the right to any modification without notice



COPMA 280B



knuckle
boom
cranes



Powerful Synergies



CPS



**CPS
STEEL**

CPS GROUP S.P.A.

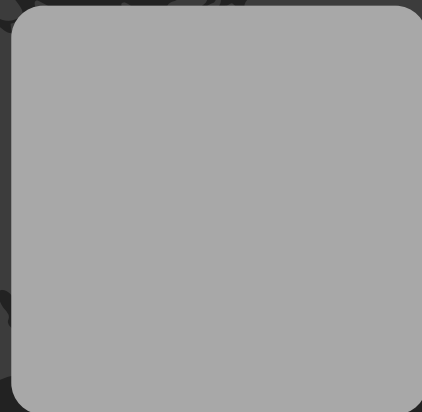
281 Via Emilia , Castel Bolognese (RA) , 48014
Italy

T +39 0546 653 711

sales.cpsgroup@cps-group.com

service.cpsgroup@cps-group.com

cps-group.com



COPMA MODEL 280B TOP RANGE 3-2021 all rights reserved CPS GROUP

