



Powerful Synergies



[cps-group.com](http://cps-group.com)



# COPMA

## 37

**ESSENTIAL  
MODEL**

# COPMA 37

Performance & Power

**37 IS INNOVATIVE ENGINEERING  
FOR TOP PRECISION, EFFICIENCY,  
SPEED AND PERFORMANCE.  
AN ESSENTIAL MASTERPIECE  
OF LIFTING TECHNOLOGY.**

- **ESSENTIAL model, load category - 3.7 Ton/Mt.**
- **Essential in design, powerful in performance**
- **Robust arm system**
- **Simple and reliable**
- **Excellent operational safety**





---

**THE MOST  
POWERFUL  
CRANE FOR  
THE TOUGHEST  
MARKETS**



# COPMA 37

More Safety & Security

**DESIGNED WITH THE HIGHEST  
HYDRAULIC SYSTEMS AND THE  
TOUGHEST STRUCTURAL STEEL  
TO PERFORM THE MAXIMUM  
LIFTING CAPACITY.**

- **Optimized and reliable hydraulic technology**
- **Column with high mechanical characteristics**
- **High Degree of User Friendliness**
- **Efficiency and Reliability thanks to essential design**
- **Excellent weight/performance ratio**





**DESIGNED  
FOR FLEXIBLE  
SERVICES**



# COPMA 37

## Technical Features

**CUTTING EDGE FEATURES  
FOR MAXIMUM LIFTING  
POWER, STABILITY AND  
OPERATIONAL SAFETY IN EVERY  
WORKING CONDITION.**

### Standard features

- easy use



- control



- structure



### optional features

- control

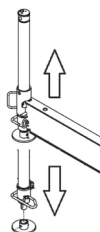


\*E.C. market specific equipment



**MLS 1.0**  
easy use  
**Manual Lifting Stabilizers 1.0**

Manual lifting of the crane legs. The manual lifting of the legs helps the operator adjust its extension manually without additional assistance from electronics or hydraulic controls.



**TAD control**  
**Transport Alert Device**

Sensors on the basement control the correct closing of the beams and a column switch sensor indicates if the crane is in a folded position, no more than 4 Mt in height. The operator is warned with light and sound signals in the truck cabin.



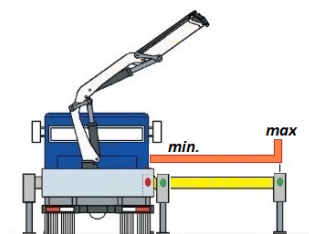
**CMS 1.0**  
control  
**Crane Monitoring System 1.0**

Crane stability control system TES1-TES2, with safety control and overload control for medium-small cranes. Controls the crane in 4 work areas, and each zone can have custom lifting settings depending on the vehicle stability.



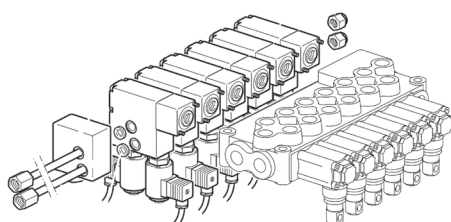
**TES 1.0**  
control  
**Truck Electronic Stability 1.0**

Active stability control for performance optimization according to the type of stabilization (1) to guarantee maximum safety in all working conditions. Mandatory in the CE market, it helps a better vehicle-crane configuration.



**RRC 2.0**  
control  
**Radio Remote Control 2.0**

The rotation system with rack and pinion is the best optimal solution for the most performative lifting capacity, it reduce the weights and crane dimension for the most compact configuration.



**RRC 3.0**  
control  
**Radio Remote Control 3.0**

Radio control with directly flanged actuation electronics with proportional distribution. The remote control allows operating the crane while constantly monitoring the areas of operation.



**RRP structure**  
**Rotation Rack Pinion**

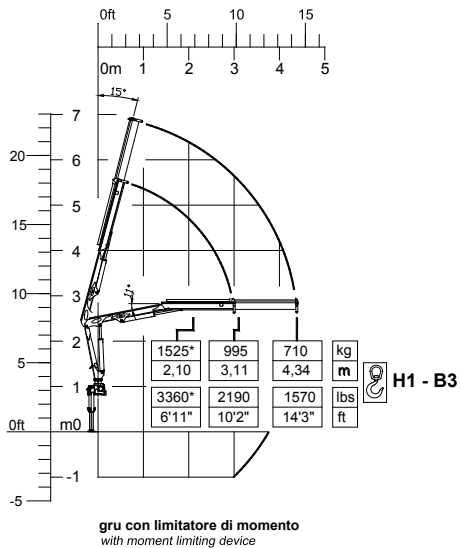
Radio remote control with the electro-hydraulic actuator connected directly to the standard control valve. The remote control allows operating the crane while continually monitoring the areas of operation.



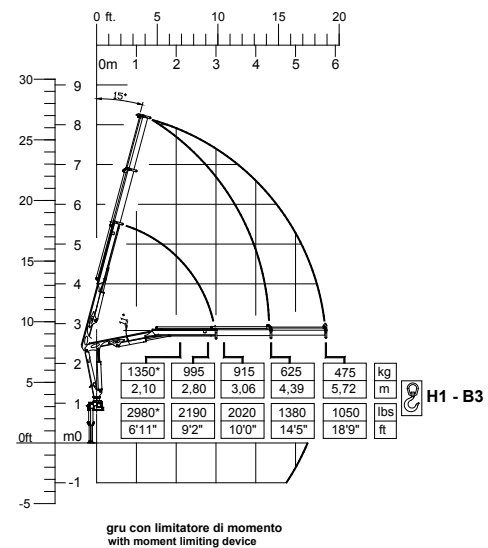
# 37 ESSENTIAL

## Load Charts

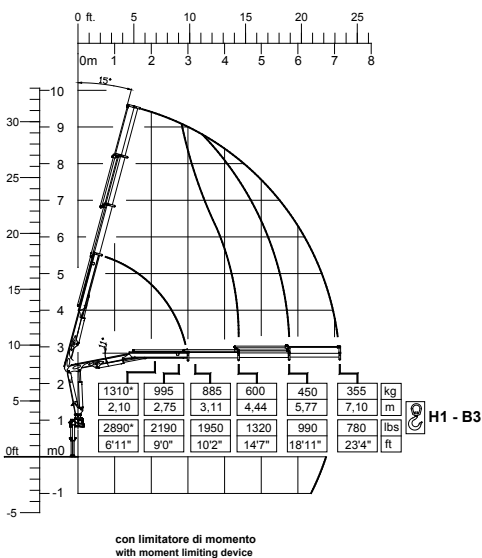
### 1 extensions



### 2 extensions



### 3 extensions

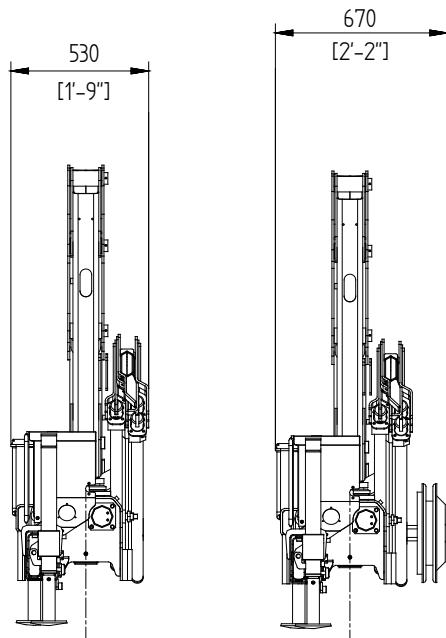




# 37 ESSENTIAL

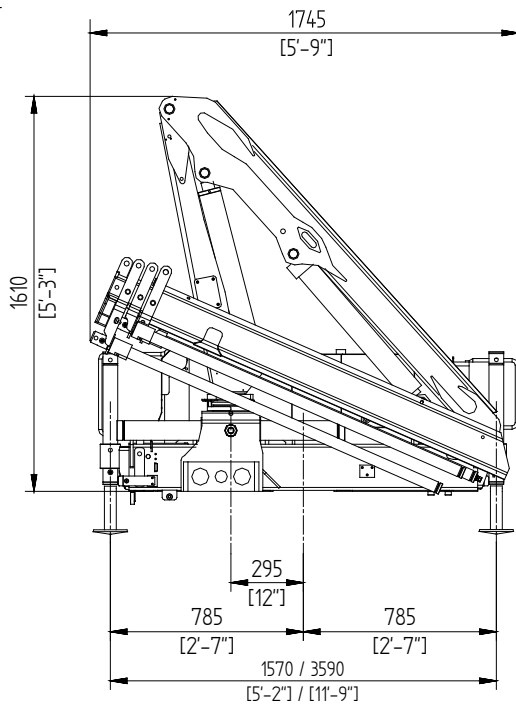
## Crane Dimensions

### back cabin left



with WIRE REEL

### rear truck














# DESIGNED FOR FLEXIBLE SERVICES












# 37 ESSENTIAL

## Technical Data

### summarized data

									
	kN.m	bar	l/min	kg	°	mm	mm	mm	mm
37.1	31.4	235	10	420	370	1745	530	1610	3590
37.2	27.8	235	10	455	370	1745	530	1610	3590
37.3	27	235	10	490	370	1745	530	1610	3590

									
	lbs.ft	psi	gal/min	lbs	°	ft/inc	ft/inc	ft/inc	ft/inc
37.1	22712	3408	2,6	930	370	5'9"	1'9"	5'3"	11'9"
37.2	20108	3408	2,6	1000	370	5'9"	1'9"	5'3"	11'9"
37.3	19530	3480	2,6	1080	370	5'9"	1'9"	5'3"	11'9"

### technical data

<b>Max. lifting moment</b>	31.4 kNm	22712 ft.lbs
<b>Max. hydraulic outreach</b>	7.10 m	23'4"
<b>Slewing angle</b>	370°	370°
<b>Slewing torque</b>	485.3 daNm	3510 ft.lbs
<b>Stabilizer spread</b>	3.60 mt	11'9"
<b>Fitting space required (min./max)</b>	0.53 m	1'9"
<b>Width folded</b>	1.75 m	5'9"
<b>Max. operating pressure</b>	235 bar	3408 psi
<b>Recommended pump capacity</b>	10 l/min	2.6 US gal./min
<b>Dead weight (vers .1)</b>	420 kg	930 lbs

\* Note:  
 Technical features are not binding.  
 The company reserves itself the right to any modification without notice



# COPMA 37



knuckle  
boom  
cranes



Powerful Synergies



**CPS**



**CPS  
STEEL**

## CPS GROUP S.P.A.

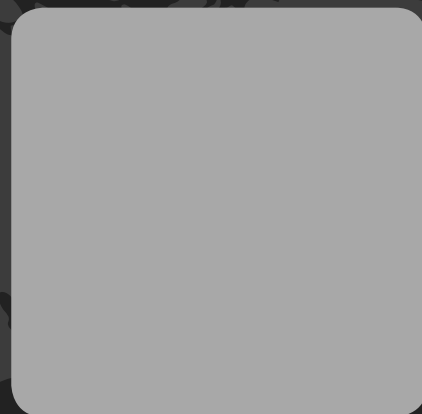
281 Via Emilia , Castel Bolognese (RA) , 48018  
Italy

T +39 0546 653 711

[sales.cpsgroup@cps-group.com](mailto:sales.cpsgroup@cps-group.com)

[service.cpsgroup@cps-group.com](mailto:service.cpsgroup@cps-group.com)

[cps-group.com](http://cps-group.com)



UNICERT  
ISO 9001:2008



COPMA MODEL 37 ESSENTIAL 5-2019 all rights reserved CPS GROUP S.P.A.