



Powerful Synergies



# COPMA

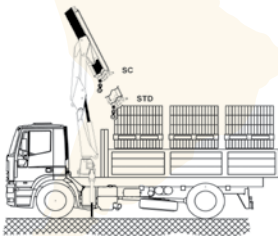
**SC  
MODELS**

# COPMA SC

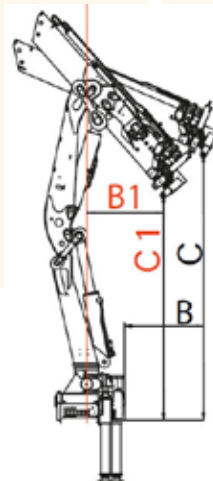
Performance & Power

**SC MODELS ARE DESIGNED WITH A SHORTER SECONDARY BOOM WHICH ALLOWS HEAVY LOADING AND UNLOADING, AT A VERY CLOSE DISTANCE.**

- Tailored models for a handy close distance lifting
- Compact design for superior performance
- High tensile strength steel
- Efficient safety system
- Reliability, speed and precision



The SC version (Short Secondary Boom) is a crane equipped with a secondary boom shorter than standard which allows to load more smoothly next to the column.



## MINIMUM HOOK HEIGHT TABLE FOR "SC" CRANE

- Measure B1 / C1 corresponds to the distance of 1 m from the column axis.
- Measure B / C corresponds to the distance of 1 m at the end of the crane.
- Value expressed in kg and lbs corresponds the maximum withheld by the crane in these positions.







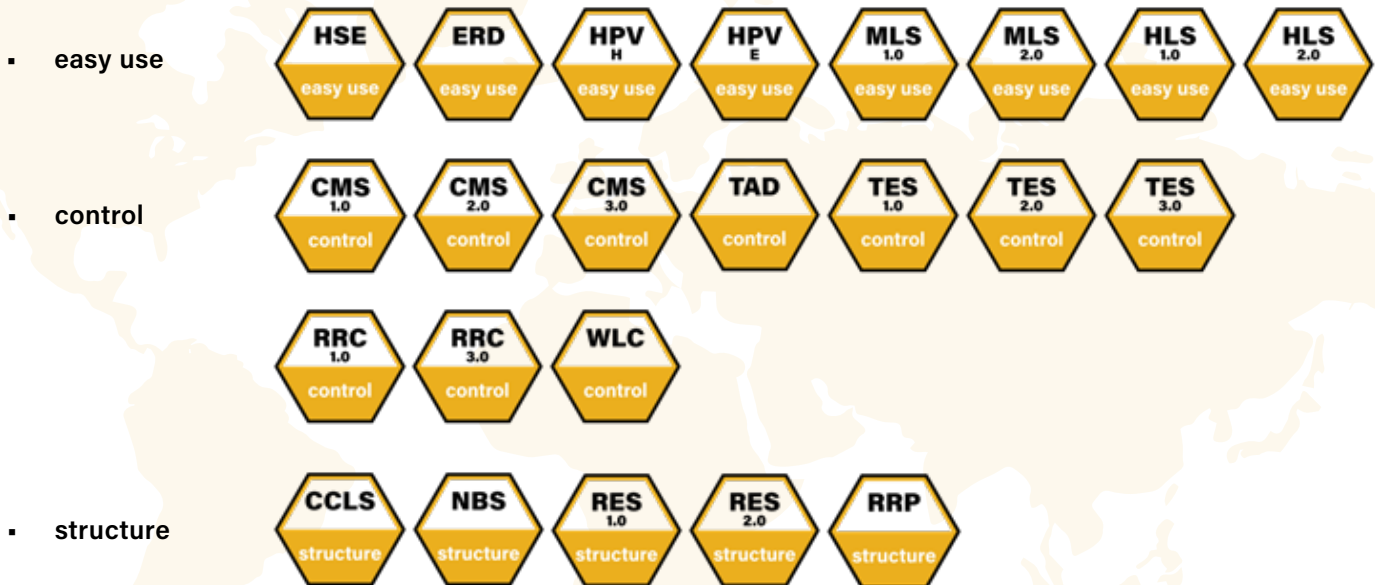
**SC SPECIAL  
CRANE WITH  
SHORT BOOM  
EASY TO USE**



# COPMA SC

**CUTTING EDGE FEATURES  
FOR MAXIMUM LIFTING  
POWER, STABILITY AND  
OPERATIONAL SAFETY IN EVERY  
WORKING CONDITION.**

## All features





### High Speed Extension

Hydraulic system for reducing load losses and bottlenecks for the correct output sequence of the extensions by increasing the speed of 30%-60% thanks to the regenerative valve. Greater continuous performance thanks to lower fluid temperature.



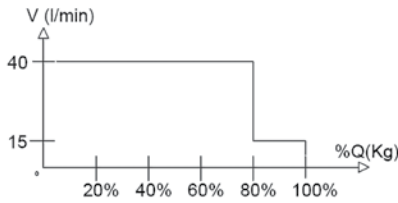
### Electronic Radio Display

A display on the remote control allows the operator to maintain the total control of all the crane functions in real time by managing the work mode, the stability control, and oversee any maintenance and diagnostic messages.



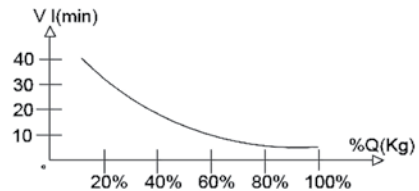
### High Power Velocity Hydraulic

Fully automatic hydraulic system for adjusting the crane lifting speed according to the maximum working pressure. With this system load capacity of the machine is optimized by reducing the dynamic structural effects.



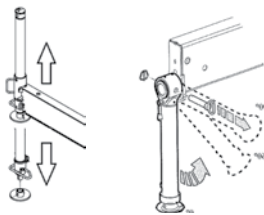
### High Power Velocity Electronic

A valve electronically manages the flow of oil to the distributor by increasing the load capacity of the crane and intervening on the lifting speed. Allowing the reduction of dynamic effects while optimizing performance.



### Manual Lifting Stabilizers 1.0

Manual lifting of the crane legs. The manual lifting of the legs helps the operator adjust its extension manually without additional assistance from electronics or hydraulic controls.



### Manual Lifting Stabilizers 2.0

Manual raising of the stabilizers facilitated by a compressed gas cylinder which assists the operator during the rotation of the jack. This system assists the operator with less effort in adjusting the legs.



### Hydraulic Lifting Stabilizers 1.0

Simplified vertical hydraulic lifting system: no auxiliary hydraulic devices are supplied. The stabilizer cylinder lifts up thanks to the presence of a sliding rod equipped with a braking pad which allows the stabilizer cylinder to slide vertically inside the bushing attached to the stabilizing



### Hydraulic Lifting Stabilizers 2.0

The stabilizer cylinder is lifted thanks to an auxiliary jack, allowing the vertical movement inside a bush or a rotation around a pin. This easy use system saves time and allows an efficient stabilizer set up.







### Crane Monitoring System 1.0

Crane stability control system TES1-TES2, with safety control and overload control for medium-small cranes. Controls the crane in 4 work areas, and each zone can have custom lifting settings depending on the vehicle stability.



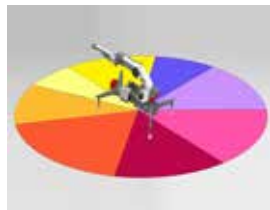
### Crane Monitoring System 2.0

Crane stability control system TES2-TES3 with safety and overload controls and HPVE lifting speed management. Active control on 4-8 working areas according to the model and vehicle stability requirements.



### Crane Monitoring System 3.0

Crane stability control system TES2-TES3, with safety and overload controls medium high-range crane and HPVE lifting speed management. Active control on 4-8 working areas according to the model and vehicle stability requirements.



### Transport Alert Device

Sensors on the basement controls the correct closing of the beams and a column switch sensor indicates if the crane is in a folded position, no more than 4 mt in height. The operator is warned with light and sound signals in the truck cabin.



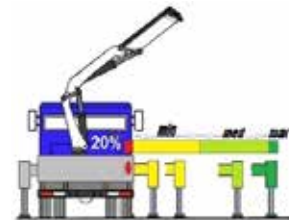
### Truck Electronic Stability 2.0

Active stability control for performance optimization according to the type of stabilization (2) to guarantee maximum safety in all working conditions. Mandatory in the CE market, it helps a better vehicle-crane configuration.



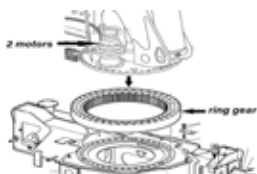
### Truck Electronic Stability 3.0

Active stability control for performance optimization according to the type of stabilization to guarantee maximum safety in all working conditions. Mandatory in the CE market, it helps a better vehicle-crane configuration.



### Rotation Endless System 2.0

Rotating system with bearing and double gearbox, equipped with clearance adjusting system with eccentric shaft. It provides the perfect transmission of the rotation with the bearing.



### Rotation Rack Pinion

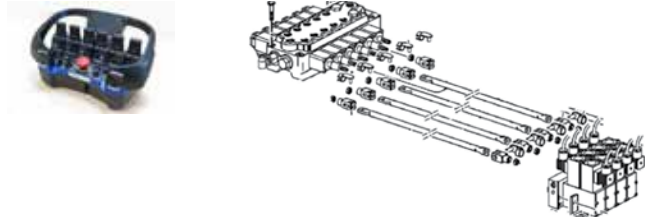
Radio remote control with the electro-hydraulic actuator connected directly to the standard control valve. The remote control allows operating the crane while continually monitoring the areas of operation.





### Radio Remote Control 1.0

Radio remote control with actuation electronics connected by rod with the standard distribution. The remote control allows operating the crane while continually monitoring the areas of operation.



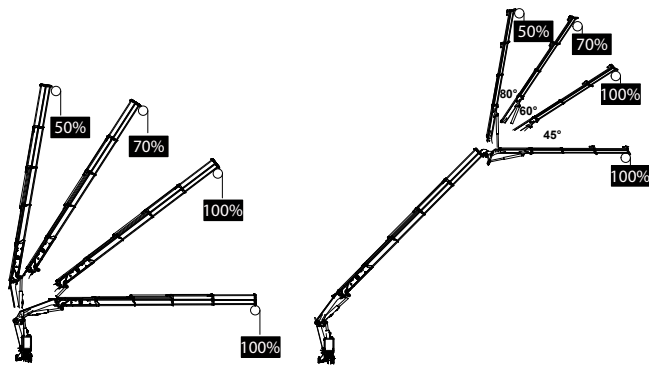
### Radio Remote Control 3.0

Radio control with directly flanged actuation electronics with proportional distribution. The remote control allows operating the crane while constantly monitoring the areas of operation.



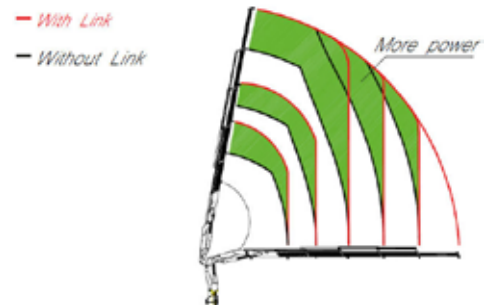
### Winch Linear Control

The winch linear electronic control allows pulling the rope according to the working angle of the crane and the JIB. It optimizes the load control and makes every movement easier and safer.



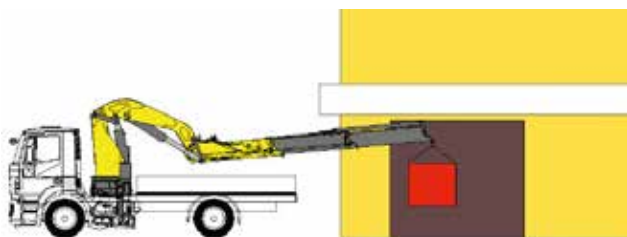
### Constant Control Link

The cranes equipped with connecting rods on the articulations, with a constant lifting moment over the entire working arc, allow to 100% optimize the crane's capacity in positions close to the maximum vertical.



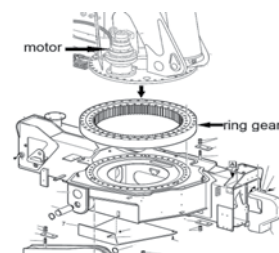
### Negative Boom System

The linkage on the articulation of the secondary boom permits the introduction of loads within restricted spaces. It enables the recovery of the deflection of the extension boom group due to the weight and the load raised on the extensions.



### Rotation Endless System 1.0

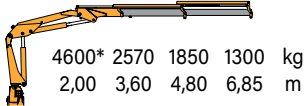
A rotating bearing and one gearbox system, the electric wires are linked between base-column with a swivel electrical-hydraulic joint. Allows operator to gain maximum power also at the slowest operational speed and having the highest precision.



# SC MODEL - ESSENTIAL MODEL 108 sc

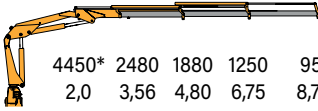


**108.2 sc** 10140\* 5680 4080 2870 lbs  
6'7" 10'10" 15'11" 22'6" ft



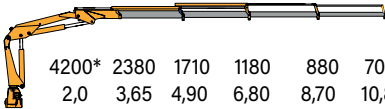
4600\* 2570 1850 1300 kg  
2,00 3,60 4,80 6,85 m

**108.3 sc** 9810\* 5470 3970 2755 2095 bs  
6'7" 11'7" 15'75" 21'1" 28'55" ft



4450\* 2480 1880 1250 950 kg  
2,0 3,56 4,80 6,75 8,70 m

**108.4 sc** 9260\* 5250 3770 2600 1940 1540 lbs  
6'7" 12'0" 16'1" 22'3" 28'55" 35'4" ft



4200\* 2380 1710 1180 880 700 kg  
2,0 3,65 4,90 6,80 8,70 10,80 m

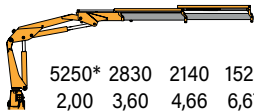
\* Theoretical capacity at fixed hook



# SC MODEL - ESSENTIAL MODEL 128 sc

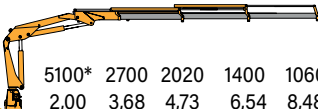


**128.2 sc** 11570\* 6240 2140 1520 lbs  
6'7" 10'11" 15'3" 21'3" ft



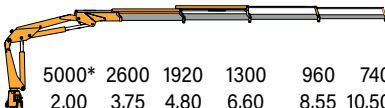
5250\* 2830 2140 1520 kg  
2,00 3,60 4,66 6,67 m

**128.3 sc** 11240\* 5950 4450 3090 2340 lbs  
6'7" 12'1" 15'6" 21'5" 27'10" ft



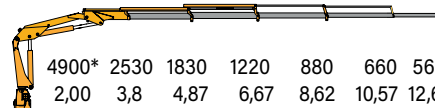
5100\* 2700 2020 1400 1060 kg  
2,00 3,68 4,73 6,54 8,48 m

**128.4 sc** 11130\* 5950 4230 2870 2120 1630 lbs  
6'7" 12'4" 15'9" 21'8" 28'1" 34'5" ft



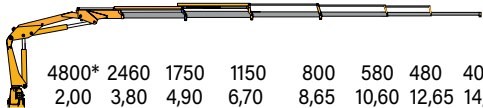
5000\* 2600 1920 1300 960 740 kg  
2,00 3,75 4,80 6,60 8,55 10,50 m

**128.5 sc** 10800\* 5580 4030 2690 1810 1430 1210 lbs  
6'7" 12'6" 16'10" 21'11" 28'3" 34'8" 41'4" ft



4900\* 2530 1830 1220 880 660 560 kg  
2,00 3,8 4,87 6,67 8,62 10,57 12,60 m

**128.6 sc** 10580\* 5420 3860 2540 1760 1280 1060 880 lbs  
6'7" 12'6" 16'1" 22'0" 28'5" 34'9" 41'6" 48'3" ft

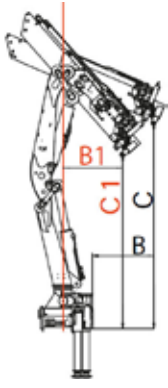


4800\* 2460 1750 1150 800 580 480 400 kg  
2,00 3,80 4,90 6,70 8,65 10,60 12,65 14,70 m

\* Theoretical capacity at fixed hook



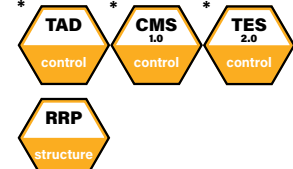




| MODEL   | B<br>mm<br>ft/inc | C<br>mm<br>ft/inc | B1<br>mm<br>ft/inc | C1<br>mm ft/<br>inc | Max. load<br>withhed |
|---------|-------------------|-------------------|--------------------|---------------------|----------------------|
| 108.2sc | 830<br>2'9"       | 0000<br>0'0"      | 1000<br>3'3"       | 3680<br>12'1"       | 3300<br>7282         |
| 108.3sc | 905<br>3'0"       | 4154<br>13'8"     | 1000<br>3'3"       | 3540<br>11'7"       | 3250<br>7160         |
| 108.4sc | 984<br>3'3"       | 4165<br>13'8"     | 1000<br>3'3"       | 3413<br>11'2"       | 3200<br>7050         |

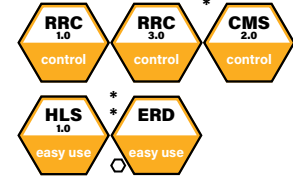
### standard

- control
- structure



### optional

- control
- easy use

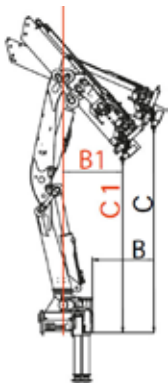


\*CE version  
 \* Only for CE version  
 ○ Only in combination with CMS 2.0

|         | kN.m | bar | l/min | kg   | °   | mm   | mm  | mm   | mm        |
|---------|------|-----|-------|------|-----|------|-----|------|-----------|
| 108.2sc | 90.7 | 280 | 25    | 1050 | 400 | 2323 | 737 | 2106 | 4350/5200 |
| 108.3sc | 86,6 | 280 | 25    | 1140 | 400 | 2323 | 737 | 2106 | 4350/5200 |
| 108.4sc | 85,2 | 280 | 25    | 1210 | 400 | 2323 | 737 | 2106 | 4350/5200 |

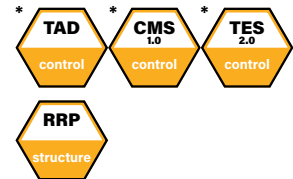
|         | lbs.ft | psi  | gal/min | lbs  | °   | ft/inc | ft/inc | ft/inc | ft/inc       |
|---------|--------|------|---------|------|-----|--------|--------|--------|--------------|
| 108.2sc | 66896  | 4060 | 6,6     | 2310 | 400 | 7'7"   | 2'5"   | 6'1"   | 14'9"/16'11" |
| 108.3sc | 63872  | 4060 | 6,6     | 2510 | 400 | 7'7"   | 2'5"   | 6'1"   | 14'9"/16'11" |
| 108.4sc | 62840  | 4060 | 6,6     | 2670 | 400 | 7'7"   | 2'5"   | 6'1"   | 14'9"/16'11" |



| MODEL   | B<br>mm<br>ft/inc | C<br>mm<br>ft/inc | B1<br>mm<br>ft/inc | C1<br>mm<br>ft/inc | Max.<br>load<br>withhed |
|---------|-------------------|-------------------|--------------------|--------------------|-------------------------|
| 128.2sc | 1000<br>3'3"      | 3976<br>13'1"     | 1000<br>3'3"       | 3400<br>11'2"      | 3350<br>7390            |
| 128.3sc | 1000<br>3'3"      | 3796<br>12'5"     | 1000<br>3'3"       | 3310<br>10'10"     | 3290<br>7250            |
| 128.4sc | 1000<br>3'3"      | 3640<br>12'0"     | 1000<br>3'3"       | 3413<br>11'2"      | 3310<br>10'10"          |
| 128.5sc | 1000<br>3'3"      | 3516<br>11'6"     | 1000<br>3'3"       | 3120<br>10'3"      | 3170<br>6990            |
| 128.6sc | 1000<br>3'3"      | 3398<br>11'2"     | 1000<br>3'3"       | 3415<br>11'2"      | 3110<br>6860            |

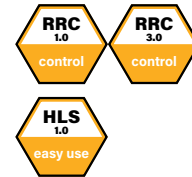
### standard

- control
- structure



### optional

- control
- easy use



\*CE version

|         | kN.m | bar | l/min | kg   | °   | mm   | mm  | mm   | mm        |
|---------|------|-----|-------|------|-----|------|-----|------|-----------|
| 128.2sc | 100  | 310 | 25    | 1370 | 400 | 2360 | 821 | 2202 | 4380/5240 |
| 128.3sc | 97,4 | 310 | 25    | 1476 | 400 | 2360 | 821 | 2202 | 4380/5240 |
| 128.4sc | 95,6 | 290 | 25    | 1573 | 400 | 2360 | 821 | 2202 | 4380/5240 |
| 128.5sc | 94,3 | 290 | 25    | 1650 | 400 | 2362 | 821 | 2202 | 4380/5240 |
| 128.6sc | 91,7 | 290 | 25    | 1730 | 400 | 2412 | 830 | 2202 | 4380/5240 |

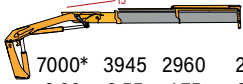
|         | lbs   | psi  | gal/min | lbs  | °   | ft/inc | ft/inc | ft/inc | ft/inc      |
|---------|-------|------|---------|------|-----|--------|--------|--------|-------------|
| 128.2sc | 89000 | 4495 | 7,9     | 3020 | 400 | 7'9"   | 2'8"   | 7'3"   | 14'4"/17'2" |
| 128.3sc | 74365 | 4205 | 7,9     | 3250 | 400 | 7'9"   | 2'8"   | 7'3"   | 14'4"/17'2" |
| 128.4sc | 71824 | 4205 | 7,9     | 3470 | 400 | 7'9"   | 2'8"   | 7'3"   | 14'4"/17'2" |
| 128.5sc | 70160 | 4205 | 7,9     | 3640 | 400 | 7'9"   | 2'8"   | 7'3"   | 14'4"/17'2" |
| 128.6sc | 68207 | 4205 | 7,9     | 3810 | 400 | 7'11"  | 2'9"   | 7'3"   | 14'4"/17'2" |

# SC MODEL - ESSENTIAL MODEL 158 sc



158.2sc

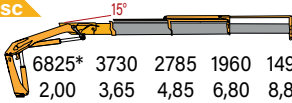
15430\* 8695 6525 4660 lbs  
6'7" 11'6" 15'6" 21'9" ft



7000\* 3945 2960 2115 kg  
2,00 3,55 4,75 6,70 m

15050\* 8225 6140 4320 3295 lbs  
6'7" 11'9" 15'9" 22'3" 29'0" ft

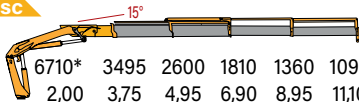
158.3sc



6825\* 3730 2785 1960 1495 kg  
2,00 3,65 4,85 6,80 8,85 m

14790\* 7705 5730 3990 3000 2405 lbs  
6'7" 12'3" 16'2" 22'6" 29'4" 36'4" ft

158.4sc

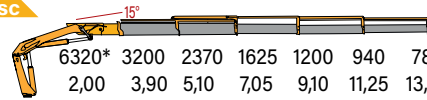


6710\* 3495 2600 1810 1360 1090 kg  
2,00 3,75 4,95 6,90 8,95 11,10 m



158.5sc

13990\* 7055 5225 3580 2645 2070 1720 lbs  
6'7" 12'18" 16'7" 23'1" 29'9" 36'9" 43'96" ft



6320\* 3200 2370 1625 1200 940 780 kg  
2,00 3,90 5,10 7,05 9,10 11,25 13,40 m

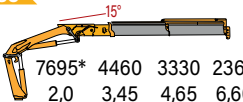
\* Theoretical capacity at fixed hook

# SC MODEL - HIGH POWER MODEL 168 sc



168.2sc

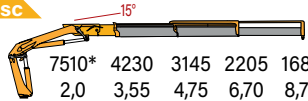
16960\* 9830 7340 5210 lbs  
6'7" 11'4" 15'3" 21'8" ft



7695\* 4460 3330 2360 kg  
2,0 3,45 4,65 6,60 m

16560\* 9330 6930 4860 3705 lbs  
6'7" 11'8" 15'7" 21'12" 28'8" ft

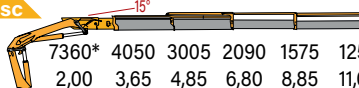
168.3sc



7510\* 4230 3145 2205 1680 kg  
2,0 3,55 4,75 6,70 8,75 m

16560\* 8930 6625 4610 3475 2770 lbs  
6'7" 11'9" 15'9" 22'3" 29'1" 36'1" ft

168.4sc

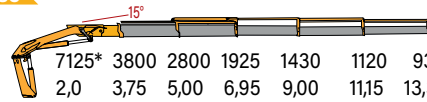


7360\* 4050 3005 2090 1575 1255 kg  
2,00 3,65 4,85 6,80 8,85 11,00 m



168.5sc

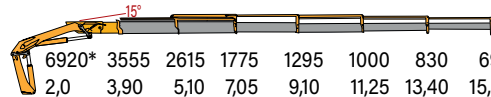
15710\* 8380 6170 4230 3140 2470 2050 lbs  
6'7" 12'3" 16'4" 22'8" 29'5" 36'6" 43'6" ft



7125\* 3800 2800 1925 1430 1120 930 kg  
2,0 3,75 5,00 6,95 9,00 11,15 13,30 m

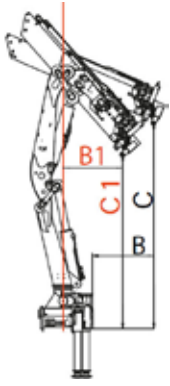
15260\* 7840 5765 3915 2855 2205 1830 1530 lbs  
6'7" 12'10" 16'9" 23'1" 29'10" 36'11" 43'12" 51'0" ft

168.6sc



6920\* 3555 2615 1775 1295 1000 830 695 kg  
2,0 3,90 5,10 7,05 9,10 11,25 13,40 15,55 m

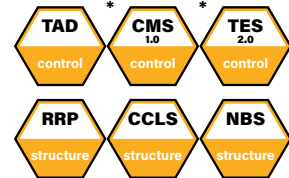
\* Theoretical capacity at fixed hook



| MODEL   | B<br>mm<br>ft/inc | C<br>mm<br>ft/inc | B1<br>mm<br>ft/inc | C1<br>mm<br>ft/inc | Max.<br>load<br>with/ed |
|---------|-------------------|-------------------|--------------------|--------------------|-------------------------|
| 158.2sc | 1000<br>3'3"      | 3450<br>11'4"     | 1000<br>3'3"       | 3120<br>10'3"      | 4750<br>10470           |
| 158.3sc | 1000<br>3'3"      | 3290<br>10'9"     | 1000<br>3'3"       | 3000<br>9'10"      | 4700<br>10360           |
| 158.4sc | 1000<br>3'3"      | 3140<br>10'4"     | 1000<br>3'3"       | 2880<br>9'5"       | 4650<br>10250           |
| 158.5sc | 1000<br>3'3"      | 3005<br>9'10"     | 1000<br>3'3"       | 2760<br>9'1"       | 4600<br>10148           |

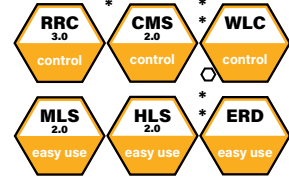
### standard

- control
- structure



### optional

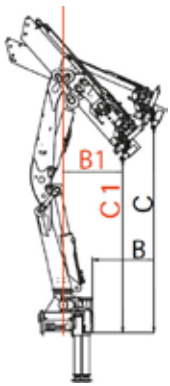
- control
- easy use



\*CE version  
 \* Only for CE version  
 ○ Only in combination with CMS 2.0

|         | kN.m  | bar | l/min | kg   | °   | mm   | mm   | mm   | mm             |
|---------|-------|-----|-------|------|-----|------|------|------|----------------|
| 158.2sc | 137,3 | 305 | 40    | 1750 | 420 | 2500 | 890  | 2270 | 4600/5270/6500 |
| 158.3sc | 133,5 | 305 | 40    | 1870 | 420 | 2500 | 900  | 2270 | 4600/5270/6500 |
| 158.4sc | 128,5 | 305 | 40    | 1980 | 420 | 2500 | 910  | 2270 | 4600/5270/6500 |
| 158.5sc | 122,4 | 305 | 40    | 2075 | 420 | 2500 | 1000 | 2270 | 4600/5270/6500 |

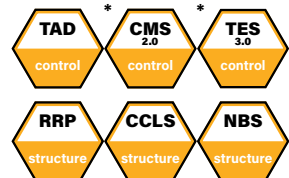
|         | lbs.ft | psi  | gal/min | lbs  | °   | ft/inc | ft/inc | ft/inc | ft/inc            |
|---------|--------|------|---------|------|-----|--------|--------|--------|-------------------|
| 158.2sc | 101011 | 4423 | 10,57   | 3860 | 420 | 8'2"   | 2'11"  | 7'5"   | 15'1"-17'3"-21'3" |
| 158.3sc | 97693  | 4423 | 10,57   | 4120 | 420 | 8'2"   | 2'11"  | 7'5"   | 15'1"-17'3"-21'3" |
| 158.4sc | 95629  | 4423 | 10,57   | 4370 | 420 | 8'2"   | 3'     | 7'5"   | 15'1"-17'3"-21'3" |
| 158.5sc | 91352  | 4423 | 10,57   | 4570 | 420 | 8'2"   | 3'3"   | 7'5"   | 15'1"-17'3"-21'3" |



| MODEL   | B<br>mm<br>ft/inc | C<br>mm<br>ft/inc | B1<br>mm<br>ft/inc | C1<br>mm<br>ft/inc | Max. load<br>with/ed |
|---------|-------------------|-------------------|--------------------|--------------------|----------------------|
| 168.2sc | 1000<br>3'3"      | 3820<br>12'6"     | 1000<br>3'3"       | 3310<br>10'10"     | 4750<br>10470        |
| 168.3sc | 1000<br>3'3"      | 3600<br>11'10"    | 1000<br>3'3"       | 3170<br>10'5"      | 4700<br>10360        |
| 168.4sc | 1000<br>3'3"      | 3415<br>11'2"     | 1000<br>3'3"       | 3040<br>9'12"      | 4650<br>10250        |
| 168.5sc | 1000<br>3'3"      | 3250<br>10'8"     | 1000<br>3'3"       | 2910<br>9'7"       | 4600<br>10148        |
| 168.6sc | 1000<br>3'3"      | 3090<br>10'2"     | 1000<br>3'3"       | 2790<br>9'2"       | 4550<br>10030        |

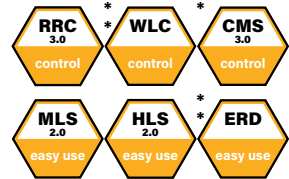
### standard

- control
- structure



### optional

- control
- easy use



\*CE version  
 \* Only for Ce version

|         | kN.m  | bar | l/min | kg   | °   | mm   | mm   | mm   | mm             |
|---------|-------|-----|-------|------|-----|------|------|------|----------------|
| 168.2sc | 151   | 300 | 40    | 1885 | 420 | 2500 | 910  | 2275 | 4600/5270/6500 |
| 168.3sc | 147,3 | 300 | 40    | 2005 | 420 | 2500 | 910  | 2275 | 4600/5270/6500 |
| 168.4sc | 145   | 300 | 40    | 2120 | 420 | 2500 | 910  | 2275 | 4600/5270/6500 |
| 168.5sc | 139,7 | 300 | 40    | 2230 | 420 | 2500 | 1000 | 2275 | 4600/5270/6500 |
| 168.6sc | 136,0 | 300 | 40    | 2330 | 420 | 2510 | 1030 | 2275 | 4600/5270/6500 |

|         | lbs.ft | psi  | gal/min | lbs  | °   | ft/inc | ft/inc | ft/inc | ft/inc            |
|---------|--------|------|---------|------|-----|--------|--------|--------|-------------------|
| 168.2sc | 111372 | 4351 | 10,57   | 4160 | 420 | 8'2"   | 3'0"   | 7'6"   | 15'1"-17'3"-21'3" |
| 168.3sc | 108643 | 4351 | 10,57   | 4420 | 420 | 8'2"   | 3'0"   | 7'6"   | 15'1"-17'3"-21'3" |
| 168.4sc | 106947 | 4351 | 10,57   | 4670 | 420 | 8'2"   | 3'0"   | 7'6"   | 15'1"-17'3"-21'3" |
| 168.5sc | 103037 | 4351 | 10,57   | 4920 | 420 | 8'3"   | 3'3"   | 7'6"   | 15'1"-17'3"-21'3" |
| 168.6sc | 100308 | 4351 | 10,57   | 5140 | 420 | 8'3"   | 3'5"   | 7'6"   | 15'1"-17'3"-21'3" |

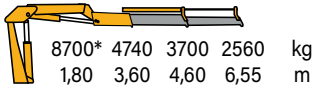


# SC MODEL - ESSENTIAL MODEL 170 sc



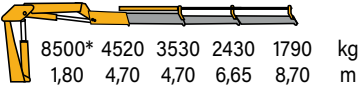
19180\*10450 8160 5640 lbs  
5'11" 11'10" 15'1" 21'6" ft

170.2sc



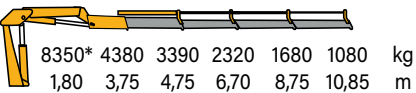
18740\* 9960 7780 5360 3950 lbs  
5'11" 12'2" 15'5" 21'10" 28'7" ft

170.3sc



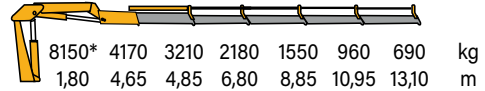
18410\* 9660 7470 5110 3700 2380 lbs  
5'11" 12'4" 15'7" 21'12" 28'8" 35'7" ft

170.4sc



17970\* 9190 7080 4810 3420 2120 1520 lbs  
5'11" 12'8" 15'11" 22'4" 29'0" 35'11" 43'0" ft

170.5sc



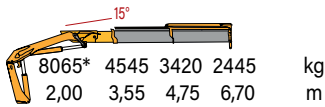
\* Theoretical capacity at fixed hook

# SC MODEL - ESSENTIAL MODEL 178 sc



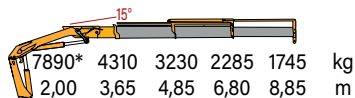
17780\* 10022 7540 5390 lbs  
6'7" 11'6" 15'6" 21'9" ft

178.2sc



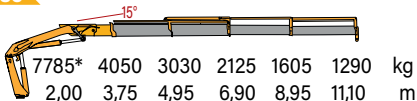
17390\* 9500 7120 5040 3850 lbs  
6'7" 11'9" 15'9" 22'3" 29'0" ft

178.3sc



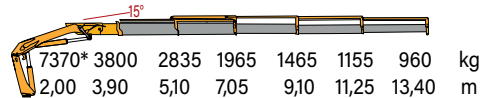
17160\* 8930 6680 4685 3540 2845 lbs  
6'7" 12'3" 16'2" 22'6" 29'4" 36'4" ft

178.4sc

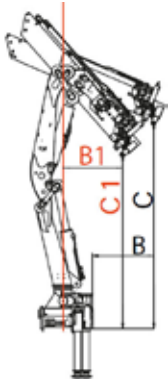


16250\* 8380 6250 4330 3230 2545 2115 lbs  
6'7" 12'18" 16'7" 23'1" 29'9" 36'9" 43'9" ft

178.5sc



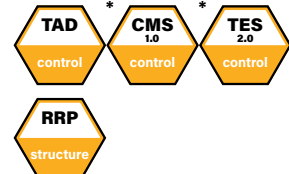
\* Theoretical capacity at fixed hook



| MODEL   | B<br>mm<br>ft/inc | C<br>mm<br>ft/inc | B1<br>mm<br>ft/inc | C1<br>mm<br>ft/inc | Max.<br>load<br>withhed |
|---------|-------------------|-------------------|--------------------|--------------------|-------------------------|
| 170.2sc | 819<br>2'10"      | 4320<br>14'2"     | 1000<br>3'3"       | 4330<br>14'2"      | 6350<br>14000           |
| 170.3sc | 899<br>2'11"      | 4365<br>14'4"     | 1000<br>3'3"       | 3670<br>12'0"      | 6285<br>13860           |
| 170.4sc | 984<br>3'3"       | 4370<br>14'4"     | 1000<br>3'3"       | 3540<br>11'7"      | 6220<br>13710           |
| 170.5sc | 1000<br>3'3"      | 4130<br>13'7"     | 1000<br>3'3"       | 3420<br>11'3"      | 6155<br>13570           |

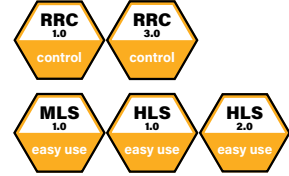
### standard

- control
- structure

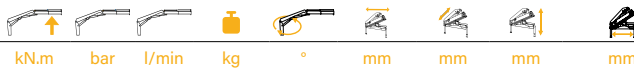


### optional

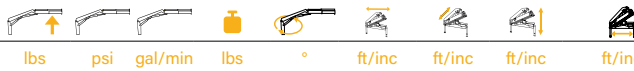
- control
- easy use



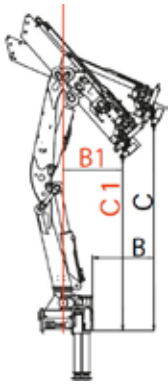
\*CE version



|         | kN.m  | bar | l/min | kg   | °   | mm   | mm  | mm   | mm        |
|---------|-------|-----|-------|------|-----|------|-----|------|-----------|
| 170.2sc | 167,4 | 300 | 40    | 1935 | 395 | 2486 | 831 | 2228 | 4555/5437 |
| 170.3sc | 164   | 300 | 40    | 2070 | 395 | 2486 | 834 | 2228 | 4555/5437 |
| 170.4sc | 161   | 300 | 40    | 2200 | 395 | 2486 | 834 | 2228 | 4555/5437 |
| 170.5sc | 157,5 | 300 | 40    | 2320 | 395 | 2486 | 920 | 2228 | 4555/5437 |



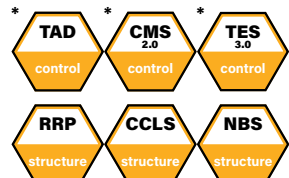
|         | lbs    | psi  | gal/min | lbs  | °   | ft/inc | ft/inc | ft/inc | ft/inc        |
|---------|--------|------|---------|------|-----|--------|--------|--------|---------------|
| 170.2sc | 123468 | 4349 | 10,5    | 4270 | 395 | 8'2"   | 2'9"   | 7'4"   | 14'11"/17'10" |
| 170.3sc | 120960 | 4349 | 10,5    | 4560 | 395 | 8'2"   | 2'9"   | 7'4"   | 14'11"/17'10" |
| 170.4sc | 118748 | 4349 | 10,5    | 4850 | 395 | 8'2"   | 2'9"   | 7'4"   | 14'11"/17'10" |
| 170.5sc | 116166 | 4349 | 10,5    | 5110 | 395 | 8'2"   | 3'0"   | 7'4"   | 14'11"/17'10" |



| MODEL   | B<br>mm<br>ft/inc | C<br>mm<br>ft/inc | B1<br>mm<br>ft/inc | C1<br>mm<br>ft/inc | Max.<br>load<br>withhed |
|---------|-------------------|-------------------|--------------------|--------------------|-------------------------|
| 178.2sc | 1000<br>3'3"      | 3450<br>11'4"     | 1000<br>3'3"       | 3120<br>10'3"      | 4750<br>10470           |
| 178.3sc | 1000<br>3'3"      | 3290<br>10'9"     | 1000<br>3'3"       | 3000<br>9'10"      | 4700<br>10360           |
| 178.4sc | 1000<br>3'3"      | 3140<br>10'4"     | 1000<br>3'3"       | 2880<br>9'5"       | 4650<br>10250           |
| 178.5sc | 1000<br>3'3"      | 3005<br>9'10"     | 1000<br>3'3"       | 2760<br>9'1"       | 4600<br>10148           |

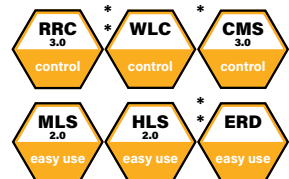
### standard

- control
- structure



### optional

- control
- easy use



\*CE version

\* Only for CE version

○ Only in combination with CMS 2.0



|         | kN.m | bar | l/min | kg   | °   | mm   | mm   | mm   | mm             |
|---------|------|-----|-------|------|-----|------|------|------|----------------|
| 178.2sc | 158  | 300 | 40    | 1830 | 420 | 2500 | 890  | 2270 | 4600/5270/6500 |
| 178.3sc | 154  | 300 | 40    | 1950 | 420 | 2500 | 900  | 2270 | 4600/5270/6500 |
| 178.4sc | 149  | 300 | 40    | 2060 | 420 | 2500 | 910  | 2270 | 4600/5270/6500 |
| 178.5sc | 145  | 300 | 40    | 2165 | 420 | 2500 | 1000 | 2270 | 4600/5270/6500 |

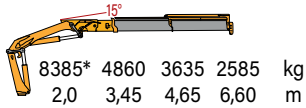


|         | lbs.ft | psi  | gal/min | lbs  | °   | ft/inc | ft/inc | ft/inc | ft/inc            |
|---------|--------|------|---------|------|-----|--------|--------|--------|-------------------|
| 178.2sc | 101011 | 4351 | 10,57   | 4030 | 420 | 8'2"   | 2'11"  | 7'5"   | 15'1"-17'3"-21'3" |
| 178.3sc | 113806 | 4351 | 10,57   | 4300 | 420 | 8'2"   | 2'11"  | 7'5"   | 15'1"-17'3"-21'3" |
| 178.4sc | 109897 | 4351 | 10,57   | 4540 | 420 | 8'2"   | 3'     | 7'5"   | 15'1"-17'3"-21'3" |
| 178.5sc | 106947 | 4351 | 10,57   | 4770 | 420 | 8'2"   | 3'3"   | 7'5"   | 15'1"-17'3"-21'3" |

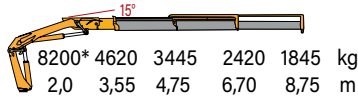
# SC MODEL - HIGH POWER MODEL 188 sc



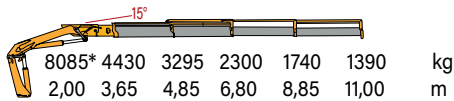
**188.2sc** 18490\*10710 8010 5700 lbs  
6'7" 11'4" 15'3" 21'8" ft



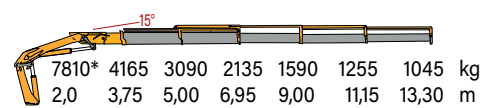
**188.3sc** 18080\* 10190 7580 5340 4070 lbs  
6'7" 11'8" 15'7" 21'12" 28'8" ft



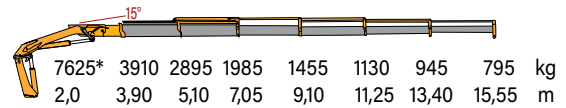
**188.4sc** 17820\* 9770 7250 5070 3820 3060 lbs  
6'7" 11'12" 15'11" 22'4" 29'0" 36'1" ft



**188.5sc** 17220\* 9180 6800 4700 3510 2765 2300 lbs  
6'7" 12'4" 16'5" 22'10" 29'6" 36'7" 43'7" ft



**188.6sc** 16810\* 8620 6360 4375 3205 2490 2085 1740 lbs  
6'7" 12'10" 16'9" 23'1" 29'10" 36'11" 43'12" 51'0" ft

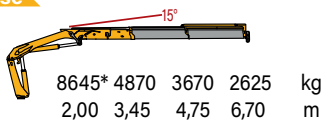


\* Theoretical capacity at fixed hook

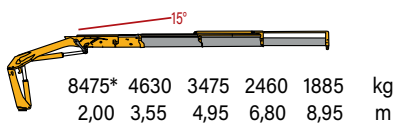
# SC MODEL - ESSENTIAL MODEL 198 sc



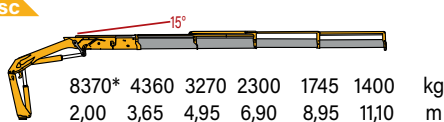
**198.2sc** 19060\* 10735 8090 5790 lbs  
6'7" 11'3" 15'6" 21'9" ft



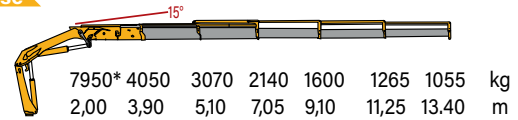
**198.3sc** 18680\* 10210 7660 5425 4155 lbs  
6'7" 11'6" 15'9" 22'3" 29'0" ft



**198.4sc** 18450\* 9610 7210 5070 3850 3085 lbs  
6'7" 11'9" 16'2" 22'6" 29'3" 36'4" ft

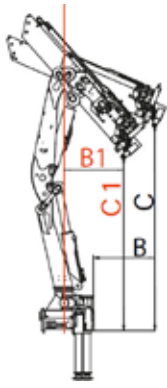


**198.5sc** 17530\* 9040 6770 4720 3525 2790 2325 lbs  
6'7" 12'18" 16'7" 23'1" 29'9" 36'9" 43'96" ft



\* Theoretical capacity at fixed hook

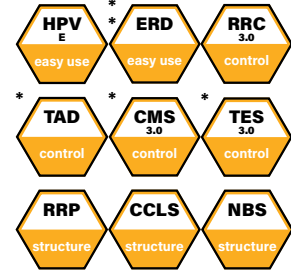




| MODEL   | B<br>mm<br>ft/inc | C<br>mm<br>ft/inc | B1<br>mm<br>ft/inc | C1<br>mm<br>ft/inc | Max. load<br>withhed |
|---------|-------------------|-------------------|--------------------|--------------------|----------------------|
| 188.2sc | 1000<br>3'3"      | 3820<br>12'6"     | 1000<br>3'3"       | 3310<br>10'10"     | 4750<br>10470        |
| 188.3sc | 1000<br>3'3"      | 3600<br>11'10"    | 1000<br>3'3"       | 3170<br>10'5"      | 4700<br>10360        |
| 188.4sc | 1000<br>3'3"      | 3415<br>11'2"     | 1000<br>3'3"       | 3040<br>9'12"      | 4650<br>10250        |
| 188.5sc | 1000<br>3'3"      | 3250<br>10'8"     | 1000<br>3'3"       | 2910<br>9'7"       | 4600<br>10148        |
| 188.6sc | 1000<br>3'3"      | 3090<br>10'2"     | 1000<br>3'3"       | 2790<br>9'2"       | 4550<br>10030        |

## standard

- easy use
- control
- structure



## optional

- control
- easy use

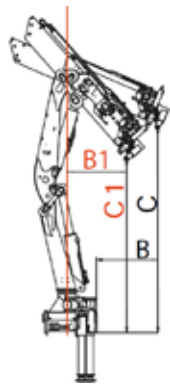


\*CE version  
\* Only for CE version

|         | kN.m  | bar | l/min | kg   | °   | mm   | mm   | mm   |
|---------|-------|-----|-------|------|-----|------|------|------|
| 188.2sc | 164,5 | 325 | 60    | 1885 | 420 | 2500 | 910  | 2275 |
| 188.3sc | 160,8 | 325 | 60    | 2005 | 420 | 2500 | 910  | 2275 |
| 188.4sc | 158,6 | 325 | 60    | 2120 | 420 | 2500 | 910  | 2275 |
| 188.5sc | 153   | 325 | 60    | 2230 | 420 | 2500 | 1000 | 2275 |
| 188.6sc | 149,5 | 325 | 60    | 2330 | 420 | 2510 | 1030 | 2275 |

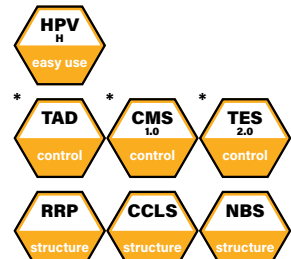
|         | lbs.ft | psi  | gal/min | lbs  | °   | ft/inc | ft/inc | ft/inc |
|---------|--------|------|---------|------|-----|--------|--------|--------|
| 188.2sc | 121314 | 4713 | 15,85   | 4160 | 420 | 8'2"   | 3'0"   | 7'6"   |
| 188.3sc | 118600 | 4713 | 15,85   | 4420 | 420 | 8'2"   | 3'0"   | 7'6"   |
| 188.4sc | 116977 | 4713 | 15,85   | 4670 | 420 | 8'2"   | 3'0"   | 7'6"   |
| 188.5sc | 112847 | 4713 | 15,85   | 4920 | 420 | 8'2"   | 3'3"   | 7'6"   |
| 188.6sc | 110266 | 4713 | 15,85   | 5140 | 420 | 8'3"   | 3'5"   | 7'6"   |



| MODEL   | B<br>mm<br>ft/inc | C<br>mm<br>ft/inc | B1<br>mm<br>ft/inc | C1<br>mm<br>ft/inc | Max. load<br>withhed |
|---------|-------------------|-------------------|--------------------|--------------------|----------------------|
| 198.2sc | 1000<br>3'3"      | 3450<br>11'4"     | 1000<br>3'3"       | 3120<br>10'3"      | 4750<br>10470        |
| 198.3sc | 1000<br>3'3"      | 3290<br>10'9"     | 1000<br>3'3"       | 3000<br>9'10"      | 4700<br>10360        |
| 198.4sc | 1000<br>3'3"      | 3140<br>10'4"     | 1000<br>3'3"       | 2880<br>9'5"       | 4650<br>10250        |
| 198.5sc | 1000<br>3'3"      | 3005<br>9'10"     | 1000<br>3'3"       | 2760<br>9'1"       | 4600<br>10148        |

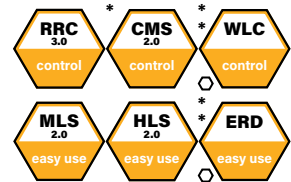
## standard

- easy use
- control
- structure



## optional

- control
- easy use



\* Only for CE version  
○ only in combination with CMS 2.0

|         | kN.m  | bar | l/min | kg   | °   | mm   | mm   | mm   |
|---------|-------|-----|-------|------|-----|------|------|------|
| 198.2sc | 164,8 | 320 | 50    | 1830 | 420 | 2500 | 890  | 2270 |
| 198.3sc | 161,2 | 320 | 50    | 1940 | 420 | 2500 | 900  | 2270 |
| 198.4sc | 156,1 | 320 | 50    | 2060 | 420 | 2500 | 910  | 2270 |
| 198.5sc | 154,9 | 315 | 50    | 2165 | 420 | 2500 | 1000 | 2270 |

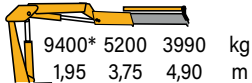
  

|         | lbs.ft | psi  | gal/min | lbs  | °   | ft/inc | ft/inc | ft/inc |
|---------|--------|------|---------|------|-----|--------|--------|--------|
| 198.2sc | 121550 | 4641 | 13,21   | 4030 | 420 | 8'2"   | 2'11"  | 7'5"   |
| 198.3sc | 118895 | 4641 | 13,21   | 4409 | 420 | 8'2"   | 2'11"  | 7'5"   |
| 198.4sc | 115060 | 4641 | 13,21   | 4540 | 420 | 8'2"   | 3'     | 7'5"   |
| 198.5sc | 115650 | 4568 | 13,21   | 4770 | 420 | 8'2"   | 3'3"   | 7'5"   |

# SC MODEL - ESSENTIAL MODEL 200 sc

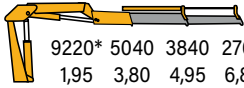


**200.1sc** 20720\* 1150 8800 lbs  
6'4" 12'3" 16'1" ft



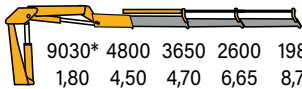
9400\* 5200 3990 kg  
1,95 3,75 4,90 m

**200.2sc** 20330\* 11110 8470 6080 lbs  
6'5" 12'6" 16'3" 22'7" ft



9220\* 5040 3840 2760 kg  
1,95 3,80 4,95 6,88 m

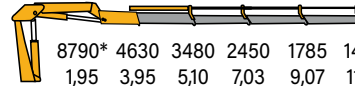
**200.3sc** 19910\* 10580 8050 5730 4370 lbs  
6'5" 12'12" 16'7" 21'11" 29'7" ft



9030\* 4800 3650 2600 1980 kg  
1,80 4,50 4,70 6,65 8,70 m

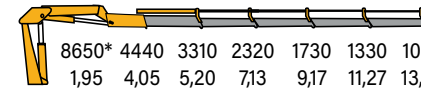


**200.4sc** 19380\* 10210 7670 5400 3940 3240 lbs  
6'5" 13'0" 16'9" 23'11" 29'9" 36'8" ft



8790\* 4630 3480 2450 1785 1470 kg  
1,95 3,95 5,10 7,03 9,07 11,17 m

**200.5sc** 19070\* 9790 7300 5110 3810 2930 2310 lbs  
6'5" 13'3" 17'1" 23'5" 30'1" 37'0" 44'1" ft



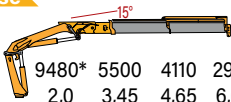
8650\* 4440 3310 2320 1730 1330 1050 kg  
1,95 4,05 5,20 7,13 9,17 11,27 13,43 m

\* Theoretical capacity at fixed hook

# SC MODEL - HIGH POWER MODEL 208 sc

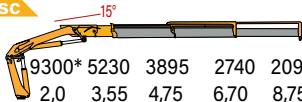


**208.2sc** 20900\* 12130 9060 6440 lbs  
6'7" 11'3" 15'3" 21'7" ft



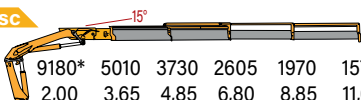
9480\* 5500 4110 2920 kg  
2,0 3,45 4,65 6,60 m

**208.3sc** 20500\* 11530 8590 6040 4610 lbs  
6'7" 11'6" 15'6" 21'9" 28'7" ft



9300\* 5230 3895 2740 2090 kg  
2,0 3,55 4,75 6,70 8,75 m

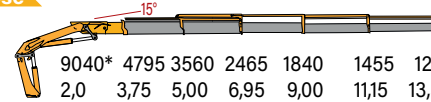
**208.4sc** 20240\* 11045 8220 5740 4345 3470 lbs  
6'7" 11'9" 15'9" 22'4" 29'1" 36'1" ft



9180\* 5010 3730 2605 1970 1575 kg  
2,00 3,65 4,85 6,80 8,85 11,00 m

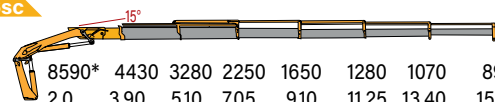


**208.5sc** 19930\* 10570 7850 5435 4055 3210 2660 lbs  
6'7" 12'3" 16'4" 22'8" 29'5" 36'6" 43'6" ft



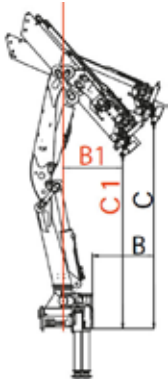
9040\* 4795 3560 2465 1840 1455 1205 kg  
2,0 3,75 5,00 6,95 9,00 11,15 13,30 m

**208.6sc** 18940\* 9770 7230 4960 3640 2820 2360 1970 lbs  
6'7" 12'8" 16'7" 23'1" 29'9" 36'9" 43'9" 51'4" ft



8590\* 4430 3280 2250 1650 1280 1070 895 kg  
2,0 3,90 5,10 7,05 9,10 11,25 13,40 15,55 m

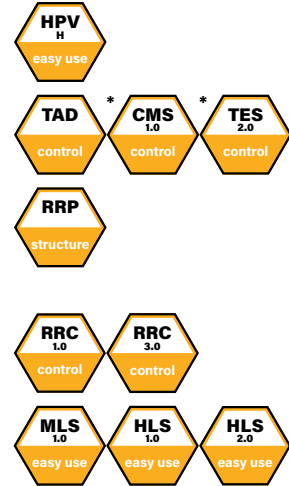
\* Theoretical capacity at fixed hook



| MODEL   | B<br>mm<br>ft/inc | C<br>mm<br>ft/inc | B1<br>mm<br>ft/inc | C1<br>mm<br>ft/inc | Max.<br>load<br>withhed |
|---------|-------------------|-------------------|--------------------|--------------------|-------------------------|
| 200.1sc | 1000<br>3'3"      | 4320<br>14'2"     | 1000<br>3'3"       | 3670<br>12'0"      | 6575<br>14500           |
| 200.2sc | 1000<br>3'3"      | 4345<br>14'3"     | 1000<br>3'3"       | 3540<br>11'7"      | 6500<br>14330           |
| 200.3sc | 1000<br>3'3"      | 4140<br>13'7"     | 1000<br>3'3"       | 3420<br>11'3"      | 6425<br>14160           |
| 200.4sc | 1000<br>3'3"      | 3910<br>12'10"    | 1000<br>3'3"       | 3310<br>10'10"     | 6350<br>14000           |
| 200.5sc | 1000<br>3'3"      | 3730<br>12'3"     | 1000<br>3'3"       | 3200<br>10'6"      | 6275<br>13830           |

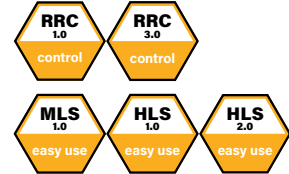
## standard

- easy use
- control
- structure



## optional

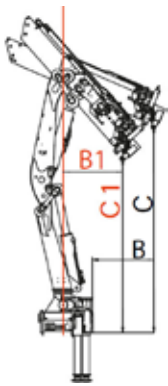
- control
- easy use



\*CE version

|         | kN.m  | bar | l/min | kg   | °   | mm   | mm  | mm   | mm        |
|---------|-------|-----|-------|------|-----|------|-----|------|-----------|
| 200.1sc | 191   | 300 | 40    | 1860 | 395 | 2510 | 848 | 2230 | 4555/5437 |
| 200.2sc | 187,9 | 300 | 40    | 1990 | 395 | 2510 | 848 | 2230 | 4555/5437 |
| 200.3sc | 183,6 | 300 | 40    | 2120 | 395 | 2510 | 848 | 2230 | 4555/5437 |
| 200.4sc | 179,4 | 300 | 40    | 2235 | 395 | 2510 | 848 | 2230 | 4555/5437 |
| 200.5sc | 176,4 | 300 | 40    | 2380 | 395 | 2510 | 948 | 2230 | 4555/5437 |

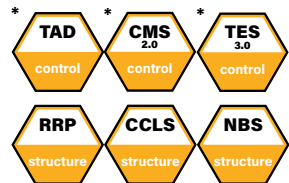
|         | lbs    | psi  | gal/min | lbs  | °   | ft/inc | ft/inc | ft/inc | ft/inc        |
|---------|--------|------|---------|------|-----|--------|--------|--------|---------------|
| 200.1sc | 140874 | 4350 | 10,5    | 4100 | 395 | 8'3"   | 2'9"   | 7'4"   | 14'11"/17'10" |
| 200.2sc | 138573 | 4350 | 10,5    | 4390 | 395 | 8'3"   | 2'9"   | 7'4"   | 14'11"/17'10" |
| 200.3sc | 135416 | 4349 | 10,5    | 4670 | 395 | 8'3"   | 2'9"   | 7'4"   | 14'11"/17'10" |
| 200.4sc | 132319 | 4350 | 10,5    | 4930 | 395 | 8'3"   | 2'9"   | 7'4"   | 14'11"/17'10" |
| 200.5sc | 130106 | 4350 | 10,5    | 5250 | 395 | 8'3"   | 3'1"   | 7'4"   | 14'11"/17'10" |



| MODEL   | B<br>mm<br>ft/inc | C<br>mm<br>ft/inc | B1<br>mm<br>ft/inc | C1<br>mm<br>ft/inc | Max. load<br>withhed |
|---------|-------------------|-------------------|--------------------|--------------------|----------------------|
| 208.2sc | 1000<br>3'3"      | 3820<br>12'6"     | 1000<br>3'3"       | 3310<br>10'10"     | 4850<br>10690        |
| 208.3sc | 1000<br>3'3"      | 3600<br>11'10"    | 1000<br>3'3"       | 3170<br>10'5"      | 4780<br>10540        |
| 208.4sc | 1000<br>3'3"      | 3410<br>11'2"     | 1000<br>3'3"       | 3040<br>9'12"      | 4710<br>10380        |
| 208.5sc | 1000<br>3'3"      | 3250<br>10'8"     | 1000<br>3'3"       | 2910<br>9'7"       | 4640<br>10230        |
| 208.6sc | 1000<br>3'3"      | 3090<br>10'2"     | 1000<br>3'3"       | 2790<br>9'2"       | 4570<br>10080        |

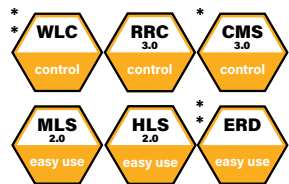
## standard

- control
- structure



## optional

- control
- easy use



\*CE version  
 \* Only for CE version

|         | kN.m  | bar | l/min | kg   | °   | mm   | mm   | mm   | mm        |
|---------|-------|-----|-------|------|-----|------|------|------|-----------|
| 208.2sc | 186   | 325 | 50    | 2170 | 420 | 2500 | 920  | 2280 | 5270/6500 |
| 208.3sc | 182   | 325 | 50    | 2310 | 420 | 2500 | 920  | 2280 | 5270/6500 |
| 208.4sc | 179   | 325 | 50    | 2440 | 420 | 2500 | 1010 | 2280 | 5270/6500 |
| 208.5sc | 176,4 | 325 | 50    | 2560 | 420 | 2500 | 1010 | 2280 | 5270/6500 |
| 208.6sc | 169,5 | 325 | 50    | 2660 | 420 | 2500 | 1030 | 2280 | 5270/6500 |

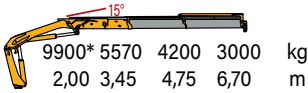
|         | lbs.ft | psi  | gal/min | lbs  | °   | ft/inc | ft/inc | ft/inc | ft/inc      |
|---------|--------|------|---------|------|-----|--------|--------|--------|-------------|
| 208.2sc | 137187 | 4713 | 13,21   | 4780 | 420 | 8'3"   | 3'0"   | 7'6"   | 17'3"-21'3" |
| 208.3sc | 134236 | 4713 | 13,21   | 5090 | 420 | 8'3"   | 3'0"   | 7'6"   | 17'3"-21'3" |
| 208.4sc | 132024 | 4713 | 13,21   | 5380 | 420 | 8'3"   | 3'4"   | 7'6"   | 17'3"-21'3" |
| 208.5sc | 129811 | 4713 | 13,21   | 5640 | 420 | 8'3"   | 3'4"   | 7'6"   | 17'3"-21'3" |
| 208.6sc | 124648 | 4713 | 13,21   | 5840 | 420 | 8'3"   | 3'5"   | 7'6"   | 17'3"-21'3" |



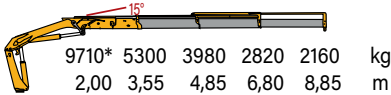
# SC MODEL - ESSENTIAL MODEL 218 sc



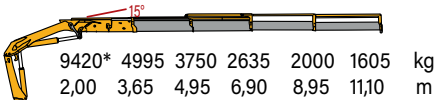
**218.2sc** 21838\* 12200 9260 6610 lbs  
6'7" 11'4" 15'7" 21'12" ft



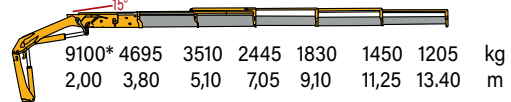
**218.3sc** 21410\* 11600 8770 6220 4760 lbs  
6'7" 11'8" 15'11" 22'4" 29'0" ft



**218.4sc** 20770\* 11010 8270 5810 4410 3540 lbs  
6'7" 12'8" 16'3" 22'8" 29'4" 36'5" ft



**218.5sc** 20060\* 10350 7740 5390 4030 3200 2660 lbs  
6'7" 12'5" 16'9" 23'2" 29'10" 36'11" 43'12" ft



\* Theoretical capacity at fixed hook

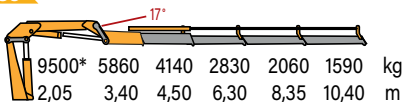
# SC MODEL - HIGH POWER MODEL 220 sc



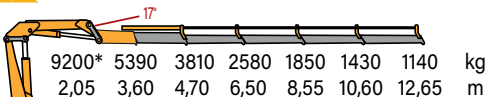
**220.3sc** 22050\* 13490 9810 6660 5030 lbs  
6'9" 11'2" 14'9" 20'8" 27'5" ft

|        |      |      |      |      |    |
|--------|------|------|------|------|----|
| 10000* | 6120 | 4450 | 3020 | 2280 | kg |
| 2,05   | 3,4  | 4,50 | 6,30 | 8,35 | m  |

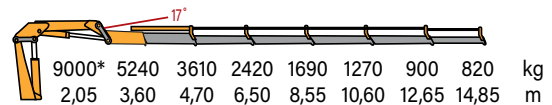
**220.4sc** 20940\* 12920 9130 6240 4540 3510 lbs  
6'7" 11'2" 14'9" 20'8" 27'5" 34'1" ft



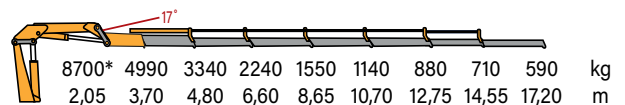
**220.5sc** 20280\* 11880 8400 5690 4080 3150 2510 lbs  
6'7" 11'10" 15'5" 21'4" 28'1" 34'9" 41'6" ft



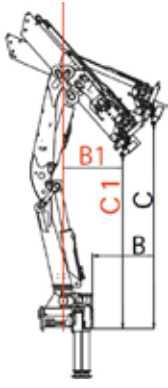
**220.6sc** 19840\* 11550 7960 5340 3730 2800 19800 1810 lbs  
6'9" 11'10" 15'10" 21'4" 28'1" 34'9" 41'6" 48'9" ft



**220.7sc** 19180\* 11000 7360 4940 3420 2510 1940 1570 1300 lbs  
6'9" 12'2" 15'9" 21'8" 28'5" 35'1" 41'10" 49'1" 56'5" ft



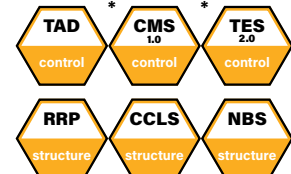
\* Theoretical capacity at fixed hook



| MODEL   | B<br>mm<br>ft/inc | C<br>mm<br>ft/inc | B1<br>mm<br>ft/inc | C1<br>mm<br>ft/inc | Max. load<br>withhed |
|---------|-------------------|-------------------|--------------------|--------------------|----------------------|
| 218.2sc | 1000<br>3'3"      | 3930<br>12'11"    | 1000<br>3'3"       | 3370<br>11'1"      | 4850<br>10690        |
| 218.3sc | 1000<br>3'3"      | 3690<br>12'1"     | 1000<br>3'3"       | 3220<br>10'6"      | 4780<br>10540        |
| 218.4sc | 1000<br>3'3"      | 3490<br>11'6"     | 1000<br>3'3"       | 3090<br>10'2"      | 4710<br>10380        |
| 218.5sc | 1000<br>3'3"      | 3315<br>10'10"    | 1000<br>3'3"       | 2960<br>9'9"       | 4640<br>10230        |

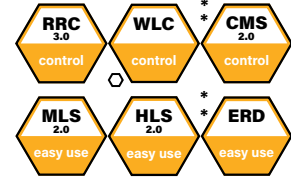
## standard

- control
- structure



## optional

- control
- easy use

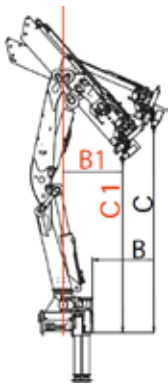


\*CE version  
 \*Only for CE version  
 ○ Only in combination with CMS 2.0

|         | kN.m  | bar | l/min | kg   | °   | mm   | mm   | mm   | mm        |
|---------|-------|-----|-------|------|-----|------|------|------|-----------|
| 218.2sc | 188,5 | 320 | 50    | 1830 | 420 | 2500 | 920  | 2270 | 5270/6500 |
| 218.3sc | 184,5 | 320 | 50    | 1940 | 420 | 2500 | 920  | 2270 | 5270/6500 |
| 218.4sc | 178,8 | 320 | 50    | 2060 | 420 | 2500 | 1010 | 2285 | 5270/6500 |
| 218.5sc | 175   | 320 | 50    | 2165 | 420 | 2500 | 1025 | 2341 | 5270/6500 |

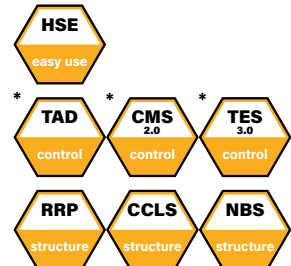
|         | lbs.ft | psi  | gal/min | lbs  | °   | ft/inc | ft/inc | ft/inc | ft/inc      |
|---------|--------|------|---------|------|-----|--------|--------|--------|-------------|
| 218.2sc | 139030 | 4641 | 13,21   | 4030 | 420 | 8'3"   | 3'0"   | 7'6"   | 17'3"-21'3" |
| 218.3sc | 136080 | 4280 | 13,21   | 4409 | 420 | 8'3"   | 3'0"   | 7'6"   | 17'3"-21'3" |
| 218.4sc | 131876 | 4641 | 13,21   | 4540 | 420 | 8'3"   | 3'4"   | 7'6"   | 17'3"-21'3" |
| 218.5sc | 129073 | 4641 | 13,21   | 4770 | 420 | 8'3"   | 3'4"   | 7'8"   | 17'3"-21'3" |



| MODEL   | B<br>mm<br>ft/inc | C<br>mm<br>ft/inc | B1<br>mm<br>ft/inc | C1<br>mm<br>ft/inc | Max. load<br>withhed |
|---------|-------------------|-------------------|--------------------|--------------------|----------------------|
| 220.3sc | 1000<br>3'3"      | 3440<br>11'3"     | 1000<br>3'3"       | 2920<br>9'7"       | 5060<br>11160        |
| 220.4sc | 1000<br>3'3"      | 3450<br>11'4"     | 1000<br>3'3"       | 2928<br>9'7"       | 4970<br>10960        |
| 220.5sc | 1000<br>3'3"      | 3200<br>10'6"     | 1000<br>3'3"       | 2735<br>9'0"       | 4880<br>10760        |
| 220.6sc | 1000<br>3'3"      | 3200<br>10'6"     | 1000<br>3'3"       | 2760<br>9'1"       | 4790<br>10560        |
| 220.7sc | 1000<br>3'3"      | 3049<br>10'0"     | 1000<br>3'3"       | 2650<br>8'8"       | 4700<br>10360        |

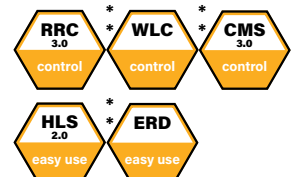
## standard

- easy use
- control
- structure



## optional

- control
- easy use



\*CE version  
 \*Only for CE version

|         | kN.m  | bar | l/min | kg   | °   | mm   | mm   | mm   | mm        |
|---------|-------|-----|-------|------|-----|------|------|------|-----------|
| 220.3sc | 204   | 280 | 40    | 2974 | 400 | 2540 | 1160 | 2190 | 5200/6400 |
| 220.4sc | 195,4 | 280 | 40    | 3120 | 400 | 2540 | 1160 | 2190 | 5200/6400 |
| 220.5sc | 190,3 | 280 | 40    | 3260 | 400 | 2540 | 1160 | 2190 | 5200/6400 |
| 220.6sc | 185   | 280 | 40    | 3430 | 400 | 2540 | 1160 | 2220 | 5200/6400 |
| 220.7sc | 181   | 280 | 40    | 3482 | 400 | 2540 | 1200 | 2240 | 5200/6400 |

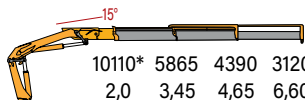
|         | lbs.ft | psi  | gal/min | lbs  | °   | ft/inc | ft/inc | ft/inc | ft/inc         |
|---------|--------|------|---------|------|-----|--------|--------|--------|----------------|
| 220.3sc | 150463 | 4060 | 10,5    | 6560 | 400 | 8'4"   | 3'10"  | 7'2"   | 16'11" / 21'0" |
| 220.4sc | 147780 | 4060 | 10,5    | 6880 | 400 | 8'4"   | 3'10"  | 7'2"   | 16'11" / 21'0" |
| 220.5sc | 140137 | 4060 | 10,5    | 7190 | 400 | 8'4"   | 3'10"  | 7'2"   | 16'11" / 21'0" |
| 220.6sc | 136449 | 4060 | 10,5    | 7560 | 400 | 8'4"   | 3'10"  | 7'3"   | 16'11" / 21'0" |
| 220.7sc | 133499 | 4060 | 10,5    | 7670 | 400 | 8'4"   | 3'11"  | 7'4"   | 16'11" / 21'0" |

# SC MODEL - HIGH POWER MODEL 228 sc



**228.2sc**

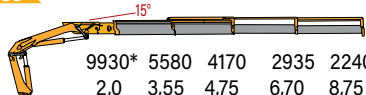
22290\*12930 9680 6880 lbs  
6'7" 11'4" 15'3" 21'8" ft



10110\* 5865 4390 3120 kg  
2,0 3,45 4,65 6,60 m

**228.3sc**

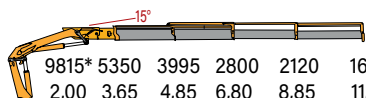
21890\* 12300 9190 6470 4940 lbs  
6'7" 11'8" 15'7" 21'12" 28'8" ft



9930\* 5580 4170 2935 2240 kg  
2,0 3,55 4,75 6,70 8,75 m

**228.4sc**

21640\* 11790 8811 6170 4670 3740 lbs  
6'7" 11'12" 15'11" 22'4" 29'0" 36'1" ft

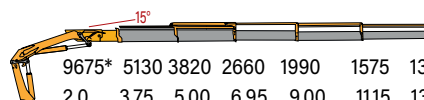


9815\* 5350 3995 2800 2120 1695 kg  
2,00 3,65 4,85 6,80 8,85 11,00 m



**228.5sc**

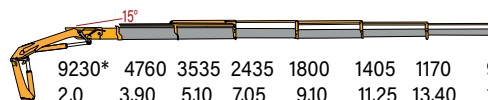
21330\* 11310 8420 5860 4390 3470 2890 lbs  
6'7" 12'4" 16'5" 22'10" 29'6" 36'7" 43'8" ft



9675\* 5130 3820 2660 1990 1575 1310 kg  
2,0 3,75 5,00 6,95 9,00 11,15 13,30 m

**228.6sc**

20350\* 10490 7790 5370 3970 3100 2580 2160 lbs  
6'7" 12'10" 16'9" 23'2" 29'10" 36'11" 43'12" 51'0" ft



9230\* 4760 3535 2435 1800 1405 1170 980 kg  
2,0 3,90 5,10 7,05 9,10 11,25 13,40 15,55 m

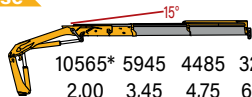
\* Theoretical capacity at fixed hook

# SC MODEL - ESSENTIAL MODEL 238 sc



**238.2sc**

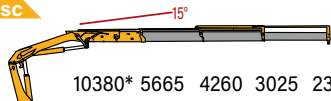
23290\* 13110 9890 7080 lbs  
6'7" 11'4" 15'7" 21'12" ft



10565\* 5945 4485 3210 kg  
2,00 3,45 4,75 6,70 m

**238.3sc**

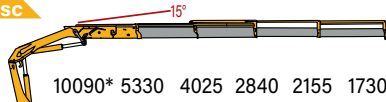
22880\* 12490 9390 6670 5100 lbs  
6'7" 11'8" 15'11" 22'4" 29'0" ft



10380\* 5665 4260 3025 2315 kg  
2,00 3,55 4,85 6,80 8,85 m

**238.4sc**

22240\* 11790 8870 6260 4750 1110 lbs  
6'7" 12'8" 16'3" 22'8" 29'4" 36'5" ft

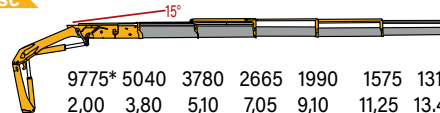


10090\* 5330 4025 2840 2155 1730 kg  
2,00 3,65 4,95 6,90 8,95 11,10 m



**238.5sc**

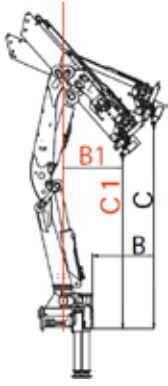
21550\* 11110 8330 5830 4390 3470 2900 lbs  
6'7" 12'5" 16'9" 23'2" 29'10" 36'11" 43'12" ft



9775\* 5040 3780 2665 1990 1575 1315 kg  
2,00 3,80 5,10 7,05 9,10 11,25 13,40 m

\* Theoretical capacity at fixed hook

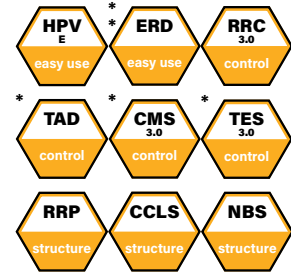




| MODEL   | B<br>mm<br>ft/inc | C<br>mm<br>ft/inc | B1<br>mm<br>ft/inc | C1<br>mm<br>ft/inc | Max. load<br>withhed |
|---------|-------------------|-------------------|--------------------|--------------------|----------------------|
| 228.2sc | 1000<br>3'3"      | 3820<br>12'6"     | 1000<br>3'3"       | 3310<br>10'10"     | 4850<br>10690        |
| 228.3sc | 1000<br>3'3"      | 3600<br>11'10"    | 1000<br>3'3"       | 3170<br>10'5"      | 4780<br>10540        |
| 228.4sc | 1000<br>3'3"      | 3410<br>11'2"     | 1000<br>3'3"       | 3040<br>9'12"      | 4710<br>10380        |
| 228.5sc | 1000<br>3'3"      | 3250<br>10'8"     | 1000<br>3'3"       | 2910<br>9'7"       | 4640<br>10230        |
| 228.6sc | 1000<br>3'3"      | 3090<br>10'2"     | 1000<br>3'3"       | 2790<br>9'2"       | 4570<br>10080        |

## standard

- easy use
- control
- structure



## optional

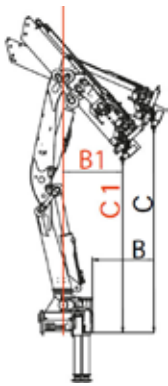
- control
- easy use



\*CE version  
\*Only for CE version

|         | kN.m  | bar | l/min | kg   | °   | mm   | mm   | mm   |
|---------|-------|-----|-------|------|-----|------|------|------|
| 228.2sc | 198,5 | 345 | 65    | 2170 | 420 | 2500 | 920  | 2280 |
| 228.3sc | 194   | 345 | 65    | 2360 | 420 | 2500 | 920  | 2280 |
| 228.4sc | 191,5 | 345 | 65    | 2490 | 420 | 2500 | 1010 | 2280 |
| 228.5sc | 188,7 | 345 | 65    | 2560 | 420 | 2500 | 1010 | 2280 |
| 228.6sc | 182   | 345 | 65    | 2660 | 420 | 2500 | 1050 | 2280 |

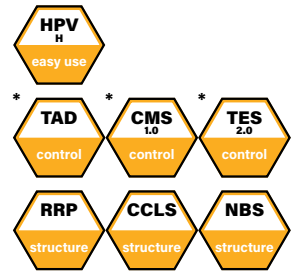
|         | lbs.ft | psi  | gal/min | lbs  | °   | ft/inc | ft/inc | ft/inc |
|---------|--------|------|---------|------|-----|--------|--------|--------|
| 228.2sc | 146406 | 5003 | 1717    | 4780 | 420 | 8'3"   | 3'0"   | 7'6"   |
| 228.3sc | 142349 | 5003 | 1717    | 5200 | 420 | 8'3"   | 3'0"   | 7'6"   |
| 228.4sc | 140317 | 5003 | 1717    | 5490 | 420 | 8'3"   | 3'4"   | 7'6"   |
| 228.5sc | 137703 | 5003 | 1717    | 5640 | 420 | 8'3"   | 3'4"   | 7'6"   |
| 228.6sc | 134974 | 5003 | 1717    | 5860 | 420 | 8'3"   | 3'5"   | 7'6"   |



| MODEL   | B<br>mm<br>ft/inc | C<br>mm<br>ft/inc | B1<br>mm<br>ft/inc | C1<br>mm<br>ft/inc | Max. load<br>withhed |
|---------|-------------------|-------------------|--------------------|--------------------|----------------------|
| 238.2sc | 1000<br>3'3"      | 3930<br>12'11"    | 1000<br>3'3"       | 3370<br>11'1"      | 4850<br>10690        |
| 238.3sc | 1000<br>3'3"      | 3690<br>12'1"     | 1000<br>3'3"       | 3220<br>10'6"      | 4780<br>10540        |
| 238.4sc | 1000<br>3'3"      | 3490<br>11'6"     | 1000<br>3'3"       | 3090<br>10'2"      | 4710<br>10380        |
| 238.5sc | 1000<br>3'3"      | 3315<br>10'10"    | 1000<br>3'3"       | 2960<br>9'9"       | 4640<br>10230        |

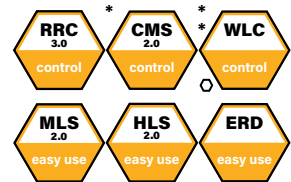
## standard

- easy use
- control
- structure



## optional

- control
- easy use



\*CE version  
\*Only for CE version  
O Only in combination with CMS 2.0

|         | kN.m  | bar | l/min | kg   | °   | mm   | mm   | mm   |
|---------|-------|-----|-------|------|-----|------|------|------|
| 238.2sc | 201   | 340 | 65    | 2110 | 420 | 2500 | 920  | 2270 |
| 238.3sc | 197   | 340 | 65    | 2240 | 420 | 2500 | 920  | 2270 |
| 238.4sc | 191,5 | 340 | 65    | 2370 | 420 | 2500 | 1010 | 2270 |
| 238.5sc | 187,8 | 340 | 65    | 2490 | 420 | 2500 | 1025 | 2285 |

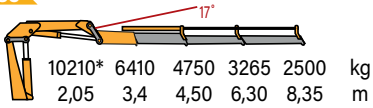
|         | lbs.ft | psi  | gal/min | lbs  | °   | ft/inc | ft/inc | ft/inc |
|---------|--------|------|---------|------|-----|--------|--------|--------|
| 238.2sc | 148250 | 4931 | 1717    | 4650 | 420 | 8'2"   | 3'0"   | 7'5"   |
| 238.3sc | 145300 | 4931 | 1717    | 4940 | 420 | 8'2"   | 2'10"  | 7'5"   |
| 238.4sc | 142143 | 4931 | 1717    | 5220 | 420 | 8'2"   | 3'4"   | 7'5"   |
| 238.5sc | 138514 | 4931 | 1717    | 5490 | 420 | 8'2"   | 3'4"   | 7'6"   |

# SC MODEL - HIGH POWER MODEL 240 sc



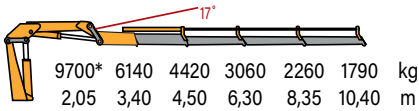
**240.3sc**

22510\* 14130 10470 7200 5510 lbs  
6'9" 11'2" 14'9" 20'8" 27'5" ft



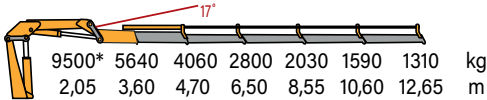
**240.4sc**

21380\* 13540 9740 6750 4980 3950 lbs  
6'9" 11'2" 14'9" 20'8" 27'5" 34'1" ft



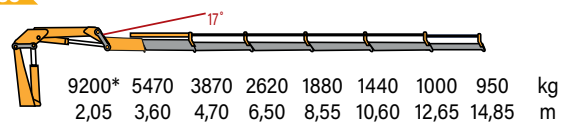
**240.5sc**

20940\* 12430 8950 6170 4480 3510 2980 lbs  
6'9" 11'10" 15'5" 21'4" 28'1" 34'9" 41'6" ft



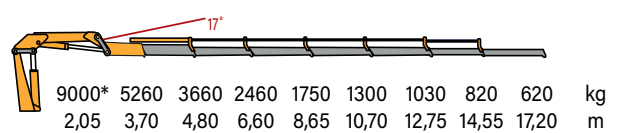
**240.6sc**

20280\* 12060 8530 5780 4140 3170 2200 2090 lbs  
6'9" 11'10" 15'10" 21'4" 28'1" 34'9" 41'6" 48'9" ft



**240.7sc**

19840\* 11060 8070 5420 3860 2870 2270 1810 1520 lbs  
6'9" 12'2" 15'9" 21'8" 28'5" 35'1" 41'10" 49'1" 56'5" ft



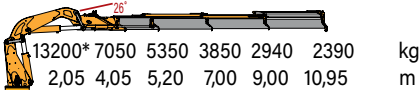
\* Theoretical capacity at fixed hook

# SC MODEL - HIGH POWER MODEL 300 sc



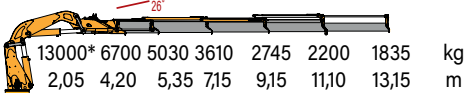
**300.4sc**

29100\* 15545 11795 8490 6480 5270 lbs  
6'7" 13'2" 17'1" 22'9" 29'5" 35'9" ft



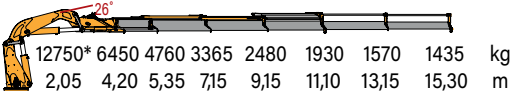
**300.5sc**

28660\* 14770 11090 7960 6050 4850 4045 lbs  
6'7" 13'8" 17'6" 23'5" 30'0" 36'4" 43'1" ft



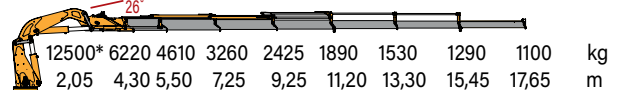
**300.6sc**

28110\* 14220 10495 7420 5470 4255 3460 3165 lbs  
6'7" 13'8" 17'6" 23'5" 30'0" 36'4" 43'1" 50'2" ft



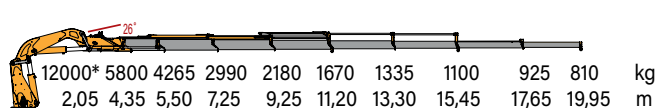
**300.7sc**

27560\* 13715 10165 7190 5345 4170 2845 2425 2185 lbs  
6'7" 14'3" 18' 23'9" 30'3" 36'7" 43'6" 50'7" 57'9" ft

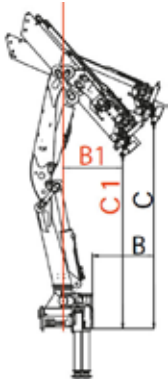


**300.8sc**

26455\* 12790 9400 6590 4810 3680 2945 2425 2040 1785 lbs  
6'7" 14'3" 18'0" 23'9" 30'3" 36'7" 43'6" 50'7" 57'9" 65'3" ft



\* Theoretical capacity at fixed hook



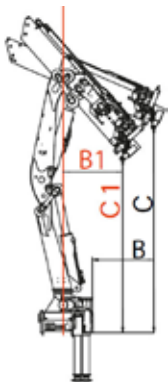
| MODEL   | B<br>mm<br>ft/inc | C<br>mm<br>ft/inc | B1<br>mm<br>ft/inc | C1<br>mm<br>ft/inc | Max.<br>load<br>withhed |
|---------|-------------------|-------------------|--------------------|--------------------|-------------------------|
| 240.3sc | 1000<br>3'3"      | 3440<br>11'3"     | 1000<br>3'3"       | 2920<br>9'7"       | 5195<br>11450           |
| 240.4sc | 1000<br>3'3"      | 3450<br>11'4"     | 1000<br>3'3"       | 2928<br>9'7"       | 5090<br>11220           |
| 240.5sc | 1000<br>3'3"      | 3200<br>10'6"     | 1000<br>3'3"       | 2735<br>9'0"       | 4985<br>11990           |
| 240.6sc | 1000<br>3'3"      | 3200<br>10'6"     | 1000<br>3'3"       | 2760<br>9'1"       | 4880<br>10760           |
| 240.7sc | 1000<br>3'3"      | 3049<br>10'0"     | 1000<br>3'3"       | 2650<br>8'8"       | 4775<br>10530           |



|         | kN.m  | bar | l/min | kg   | °   | mm   | mm   | mm   | mm        |
|---------|-------|-----|-------|------|-----|------|------|------|-----------|
| 240.3sc | 213,7 | 280 | 40    | 2990 | 400 | 2540 | 1160 | 2190 | 5200/6400 |
| 240.4sc | 204,7 | 280 | 40    | 3135 | 400 | 2540 | 1160 | 2190 | 5200/6400 |
| 240.5sc | 199   | 280 | 40    | 3275 | 400 | 2540 | 1160 | 2190 | 5200/6400 |
| 240.6sc | 193   | 280 | 40    | 3445 | 400 | 2540 | 1160 | 2220 | 5200/6400 |
| 240.7sc | 191   | 280 | 40    | 3497 | 400 | 2540 | 1200 | 2240 | 5200/6400 |

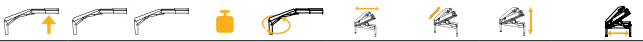


|         | lbs    | psi  | gal/min | lbs  | °   | ft/inc | ft/inc | ft/inc | ft/inc         |
|---------|--------|------|---------|------|-----|--------|--------|--------|----------------|
| 240.3sc | 157617 | 4060 | 10,5    | 6590 | 400 | 8'4"   | 3'10"  | 7'2"   | 16'11" / 21'0" |
| 240.4sc | 150979 | 4060 | 10,5    | 6910 | 400 | 8'4"   | 3'10"  | 7'2"   | 16'11" / 21'0" |
| 240.5sc | 146775 | 4060 | 10,5    | 7220 | 400 | 8'4"   | 3'10"  | 7'2"   | 16'11" / 21'0" |
| 240.6sc | 142349 | 4060 | 10,5    | 7590 | 400 | 8'4"   | 3'10"  | 7'3"   | 16'11" / 21'0" |
| 240.7sc | 140874 | 4060 | 10,5    | 7710 | 400 | 8'4"   | 3'11"  | 7'4"   | 16'11" / 21'0" |

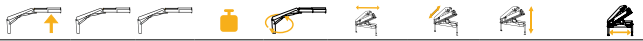


| MODEL   | B<br>mm<br>ft/inc | C<br>mm<br>ft/inc | B1<br>mm<br>ft/inc | C1<br>mm<br>ft/inc | Max.<br>load<br>withhed |
|---------|-------------------|-------------------|--------------------|--------------------|-------------------------|
| 300.4sc | 1000<br>3'3"      | 3500<br>11'6"     | 1000<br>3'3"       | 3040<br>10'0"      | 8200<br>18080           |
| 300.5sc | 1000<br>3'3"      | 3309<br>10'10"    | 1000<br>3'3"       | 2900<br>9'6"       | 8050<br>17750           |
| 300.6sc | 1000<br>3'3"      | 3301<br>10'10"    | 1000<br>3'3"       | 2890<br>9'6"       | 7900<br>17420           |
| 300.7sc | 1000<br>3'3"      | 3130<br>10'3"     | 1000<br>3'3"       | 2750<br>9'0"       | 7750<br>17090           |
| 300.8sc | 1000<br>3'3"      | 3110<br>10'2"     | 1000<br>3'3"       | 2730<br>8'11"      | 7600<br>16750           |

\*600° for no CE version



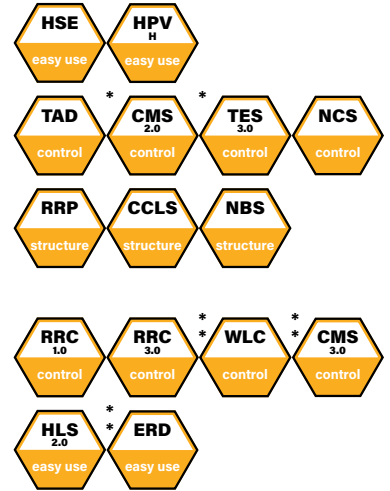
|         | kN.m  | bar | l/min | kg   | °  | mm   | mm   | mm   | mm             |
|---------|-------|-----|-------|------|----|------|------|------|----------------|
| 300.4sc | 280   | 310 | 50    | 3745 | ∞* | 2540 | 1270 | 2330 | 5155/6425/7800 |
| 300.5sc | 276   | 310 | 50    | 3895 | ∞* | 2540 | 1270 | 2330 | 5155/6425/7800 |
| 300.6sc | 265,7 | 310 | 50    | 4045 | ∞* | 2540 | 1270 | 2330 | 5155/6425/7800 |
| 300.7sc | 264,5 | 310 | 50    | 4170 | ∞* | 2540 | 1360 | 2330 | 5155/6425/7800 |
| 300.8sc | 247,5 | 310 | 50    | 4295 | ∞* | 2540 | 1370 | 2330 | 5155/6425/7800 |



|         | lbs    | psi  | gal/min | lbs  | °  | ft/inc | ft/inc | ft/inc | ft/inc            |
|---------|--------|------|---------|------|----|--------|--------|--------|-------------------|
| 300.4sc | 206517 | 4495 | 13,1    | 8260 | ∞* | 8'4"   | 4'2"   | 7'8"   | 6'11"/21'0"/25'7" |
| 300.5sc | 203567 | 4495 | 13,1    | 8590 | ∞* | 8'4"   | 4'2"   | 7'8"   | 6'11"/21'0"/25'7" |
| 300.6sc | 195823 | 4495 | 13,1    | 8920 | ∞* | 8'4"   | 4'2"   | 7'8"   | 6'11"/21'0"/25'7" |
| 300.7sc | 195085 | 4495 | 13,1    | 9190 | ∞* | 8'4"   | 4'6"   | 7'8"   | 6'11"/21'0"/25'7" |
| 300.8sc | 182547 | 4495 | 13,1    | 9470 | ∞* | 8'4"   | 4'6"   | 7'8"   | 6'11"/21'0"/25'7" |

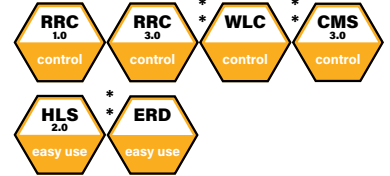
## standard

- easy use
- control
- structure



## optional

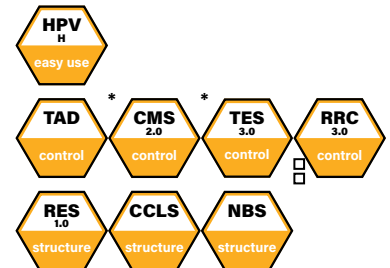
- control
- easy use



\*CE version  
\*Only for CE version

## standard

- easy use
- control
- structure



## optional

- control

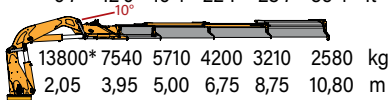


\*CE version  
\* Only for CE version/600° for NO CE version  
□ OPT. for NO CE version

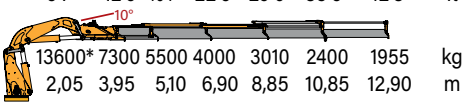
# SC MODEL - HIGH POWER MODEL 340 sc



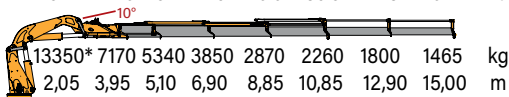
**340.4sc** 30425\*16625 12590 9260 7080 5690 lbs  
6'7" 12'9" 16'4" 22'1" 28'7" 35'4" ft



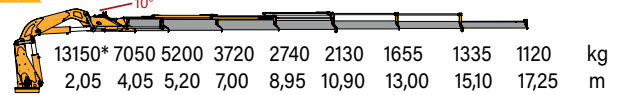
**340.5sc** 29985\*16095 12125 8820 6635 5290 4310 lbs  
6'7" 12'9" 16'7" 22'6" 29'0" 35'6" 42'3" ft



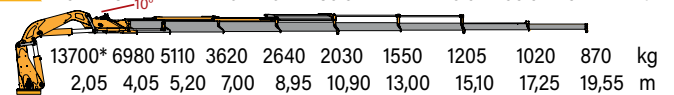
**340.6sc** 29430\* 15810 11775 8490 6330 4985 3970 3230 lbs  
6'7" 12'9" 16'7" 22'6" 29'0" 35'6" 42'3" 49'2" ft



**340.7sc** 28990\* 15545 11465 8200 6040 4695 3650 2945 2470 lbs  
6'7" 13'2" 17'1" 22'9" 29'4" 35'8" 42'7" 49'5" 56'6" ft



**340.8sc** 30205\* 15390 11265 7980 5820 4475 3420 2660 2250 1920 lbs  
6'7" 13'2" 17'1" 22'9" 29'4" 35'8" 42'7" 49'5" 56'6" 64'1" ft

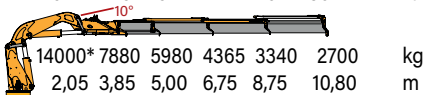


\* Theoretical capacity at fixed hook

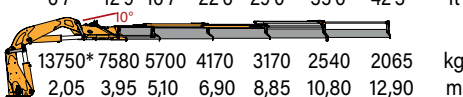
# SC MODEL - HIGH POWER MODEL 360 sc



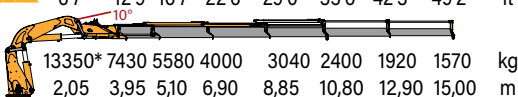
**360.4sc** 30865\* 17375 13185 9625 7365 5955 lbs  
6'7" 12'6" 16'4" 22'1" 28'7" 35'4" ft



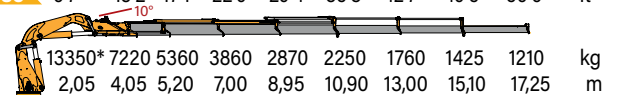
**360.5sc** 30315\* 16710 12570 9195 6990 5600 4555 lbs  
6'7" 12'9" 16'7" 22'6" 29'0" 35'6" 42'3" ft



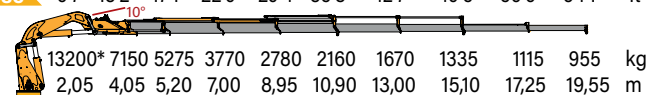
**360.6sc** 29875\* 16380 12300 8820 6700 6700 4235 3460 lbs  
6'7" 12'9" 16'7" 22'6" 29'0" 35'6" 42'3" 49'2" ft



**360.7sc** 29430\* 15920 11815 8510 6330 4960 3880 3140 2670 lbs  
6'7" 13'2" 17'1" 22'9" 29'4" 35'8" 42'7" 49'5" 56'6" ft

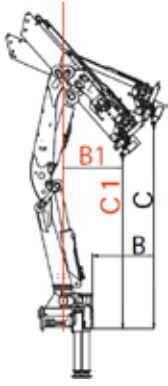


**360.8sc** 29100\* 15765 11630 8310 6130 4760 3680 2945 2460 2105 lbs  
6'7" 13'2" 17'1" 22'9" 29'4" 35'8" 42'7" 49'5" 56'6" 64'1" ft



\* Theoretical capacity at fixed hook



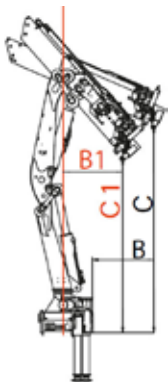


| MODEL   | B<br>mm<br>ft/inc | C<br>mm<br>ft/inc | B1<br>mm<br>ft/inc | C1<br>mm<br>ft/inc | Max.<br>load<br>withed |
|---------|-------------------|-------------------|--------------------|--------------------|------------------------|
| 340.4sc | 1000<br>3'3"      | 4190<br>13'9"     | 1000<br>3'3"       | 3235<br>10'7"      | 7250<br>15980          |
| 340.5sc | 1000<br>3'3"      | 3830<br>12'7"     | 1000<br>3'3"       | 3070<br>10'11"     | 7150<br>15760          |
| 340.6sc | 1000<br>3'3"      | 3810<br>12'6"     | 1000<br>3'3"       | 3070<br>10'11"     | 7050<br>15540          |
| 340.7sc | 1000<br>3'3"      | 3540<br>11'7"     | 1000<br>3'3"       | 2900<br>9'6"       | 6950<br>15320          |
| 340.8sc | 1000<br>3'3"      | 3530<br>11'7"     | 1000<br>3'3"       | 2900<br>9'6"       | 6850<br>15100          |

\*600° for no CE version

|         | kN.m  | bar | l/min | kg   | °  | mm   | mm   | mm   |
|---------|-------|-----|-------|------|----|------|------|------|
| 340.4sc | 292   | 290 | 60    | 4095 | ∞* | 2540 | 1380 | 2390 |
| 340.5sc | 282,8 | 290 | 60    | 4255 | ∞* | 2540 | 1380 | 2390 |
| 340.6sc | 279,8 | 290 | 60    | 4415 | ∞* | 2540 | 1460 | 2390 |
| 340.7sc | 277,8 | 290 | 60    | 4545 | ∞* | 2540 | 1480 | 2390 |
| 340.8sc | 277,3 | 290 | 60    | 4655 | ∞* | 2540 | 1480 | 2390 |

|         | lbs    | psi  | gal/min | lbs   | °  | ft/inc | ft/inc | ft/inc |
|---------|--------|------|---------|-------|----|--------|--------|--------|
| 340.4sc | 215368 | 4205 | 15,8    | 9030  | ∞* | 8'4"   | 4'6"   | 7'10"  |
| 340.5sc | 208583 | 4205 | 15,8    | 9380  | ∞* | 8'4"   | 4'6"   | 7'10"  |
| 340.6sc | 207360 | 4205 | 15,8    | 9730  | ∞* | 8'4"   | 4'9"   | 7'10"  |
| 340.7sc | 204895 | 4205 | 15,8    | 10020 | ∞* | 8'4"   | 4'10"  | 7'10"  |
| 340.8sc | 204526 | 4205 | 15,8    | 10260 | ∞* | 8'4"   | 4'10"  | 7'10"  |



| MODEL   | B<br>mm<br>ft/inc | C<br>mm<br>ft/inc | B1<br>mm<br>ft/inc | C1<br>mm<br>ft/inc | Max.<br>load<br>withed |
|---------|-------------------|-------------------|--------------------|--------------------|------------------------|
| 360.4sc | 1000<br>3'3"      | 4190<br>13'9"     | 1000<br>3'3"       | 3235<br>10'7"      | 7370<br>16250          |
| 360.5sc | 1000<br>3'3"      | 3830<br>12'7"     | 1000<br>3'3"       | 3070<br>10'11"     | 7255<br>15990          |
| 360.6sc | 1000<br>3'3"      | 3810<br>12'6"     | 1000<br>3'3"       | 3070<br>10'11"     | 7140<br>15740          |
| 360.7sc | 1000<br>3'3"      | 3540<br>11'7"     | 1000<br>3'3"       | 2900<br>9'6"       | 7025<br>15490          |
| 360.8sc | 1000<br>3'3"      | 3530<br>11'7"     | 1000<br>3'3"       | 2900<br>9'6"       | 6910<br>15230          |

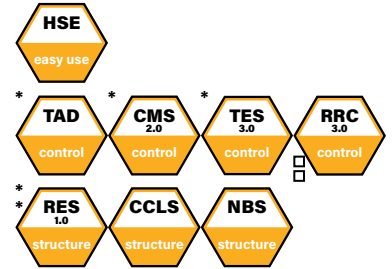
\*600° for no CE version

|         | kN.m  | bar | l/min | kg   | °  | mm   | mm   | mm   |
|---------|-------|-----|-------|------|----|------|------|------|
| 360.4sc | 297,6 | 300 | 60    | 4125 | ∞* | 2540 | 1380 | 2390 |
| 360.5sc | 293,7 | 300 | 60    | 4285 | ∞* | 2540 | 1380 | 2390 |
| 360.6sc | 287,9 | 300 | 60    | 4445 | ∞* | 2540 | 1460 | 2390 |
| 360.7sc | 286,8 | 300 | 60    | 4570 | ∞* | 2540 | 1480 | 2390 |
| 360.8sc | 284   | 300 | 60    | 4685 | ∞* | 2540 | 1480 | 2390 |

|         | lbs    | psi  | gal/min | lbs   | °  | ft/inc | ft/inc | ft/inc |
|---------|--------|------|---------|-------|----|--------|--------|--------|
| 360.4sc | 219498 | 4350 | 15,8    | 9090  | ∞* | 8'4"   | 4'6"   | 7'10"  |
| 360.5sc | 216622 | 4350 | 15,8    | 9450  | ∞* | 8'4"   | 4'6"   | 7'10"  |
| 360.6sc | 212344 | 4350 | 15,8    | 9800  | ∞* | 8'4"   | 4'9"   | 7'10"  |
| 360.7sc | 211533 | 4350 | 15,8    | 10080 | ∞* | 8'4"   | 4'10"  | 7'10"  |
| 360.8sc | 209468 | 4350 | 15,8    | 10330 | ∞* | 8'4"   | 4'10"  | 7'10"  |

## standard

- easy use
- control
- structure



## optional

- control
- easy use



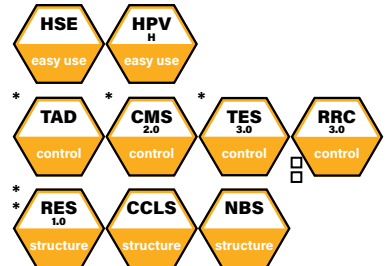
\*CE version

\* Only for CE version/600° for NO CE version

\* OPT. for NO CE version

## standard

- easy use
- control
- structure



## optional

- control
- easy use



\*CE version

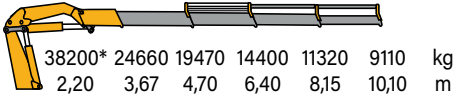
\* Only for CE version/600° for NO CE version

\* OPT. for NO CE version

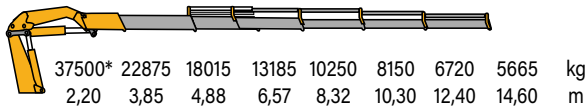
# SC MODEL - HIGH POWER MODEL 1100 sc



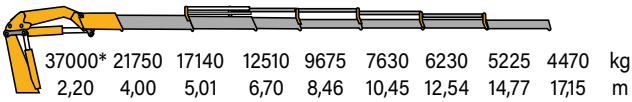
**1100.4sc** 81570\* 54370 42520 31750 24960 20080 lbs  
7'2" 12' 15'4" 21' 26'7" 33'2" ft



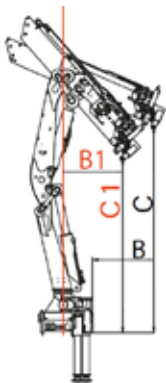
**1100.6sc** 82670\* 50430 39720 29070 22600 17970 14810 12490 lbs  
7'2" 12'6" 16' 21'6" 27'3" 33'8" 40'7" 47'9" ft



**1100.7sc** 8160\* 47950 37790 27580 21330 16820 13730 11520 9850 lbs  
7'2" 13'1" 16'4" 22' 27'8" 34'3" 41'1" 48'5" 61'4" ft



\* Theoretical capacity at fixed hook



| MODEL    | B<br>mm<br>ft/inc | C<br>mm<br>ft/inc | B1<br>mm<br>ft/inc | C1<br>mm<br>ft/inc | Max. load<br>withed |
|----------|-------------------|-------------------|--------------------|--------------------|---------------------|
| 1100.4sc | 1000<br>3'3"      | 4885<br>16'0"     | 1000<br>3'3"       | 3970<br>13'0"      | 26500<br>58420      |
| 1100.6sc | 1000<br>3'3"      | 4920<br>16'2"     | 1000<br>3'3"       | 3740<br>12'3"      | 26250<br>57870      |
| 1100.7sc | 1000<br>3'3"      | 4940<br>16'2"     | 1000<br>3'3"       | 3585<br>11'9"      | 2600<br>57320       |

## standard

• easy use



• control



• structure



## optional

• control



• easy use



\*CE version  
Slewing system with 2 motors, pinion and gear  
\* Only for CE version

|          | kN.m | bar | l/min | kg   | ° | mm   | mm   | mm   | mm        |
|----------|------|-----|-------|------|---|------|------|------|-----------|
| 1100.4sc | 888  | 330 | 100   | 8900 | ∞ | 2500 | 1944 | 2768 | 9050/1205 |
| 1100.6sc | 864  | 330 | 100   | 9500 | ∞ | 2530 | 1950 | 2768 | 9050/1205 |
| 1100.7sc | 853  | 330 | 100   | 9920 | ∞ | 2547 | 1970 | 2768 | 9050/1205 |

|          | lbs    | psi  | gal/min | lbs   | ° | ft/inc | ft/inc | ft/inc | ft/inc      |
|----------|--------|------|---------|-------|---|--------|--------|--------|-------------|
| 1100.4sc | 644570 | 4785 | 26,3    | 19625 | ∞ | 8'2"   | 6'6"   | 9'1"   | 29'9"/39'6" |
| 1100.6sc | 637000 | 4785 | 26,3    | 20950 | ∞ | 8'4"   | 6'11"  | 9'1"   | 29'9"/39'6" |
| 1100.7sc | 619630 | 4785 | 26,3    | 21870 | ∞ | 8'4"   | 6'11"  | 9'1"   | 29'9"/39'6" |





**SC CRANES ARE  
REALLY SPECIAL  
FOR MASSIVE  
LIFTS AT A  
SHORT DISTANCE**



# COPMA SC



knuckle  
boom  
cranes



Powerful Synergies



**CPS**



**CPS  
STEEL**

## CPS GROUP S.P.A.

281 Via Emilia, Castel Bolognese (RA), 48018  
Italy

T +39 0546 653 711

[sales.cpsgroup@cps-group.com](mailto:sales.cpsgroup@cps-group.com)

[service.cpsgroup@cps-group.com](mailto:service.cpsgroup@cps-group.com)

[cps-group.com](http://cps-group.com)



COPMA SC MODELS 7-2019 all rights reserved CPS GROUP

